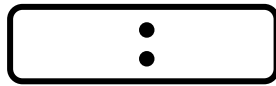
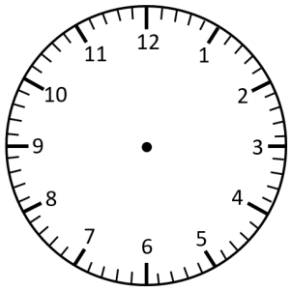


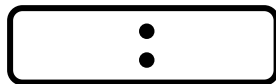
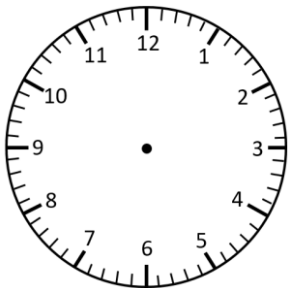
Representing Time: Digital & Analogue

O'clock & Half Past

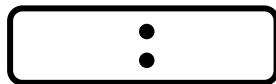
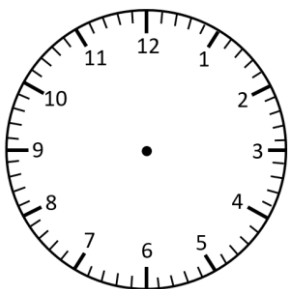
Read the times and represent in **analogue** and **digital** forms.



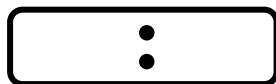
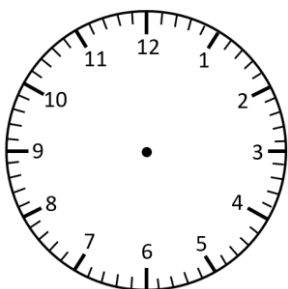
half past 2



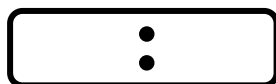
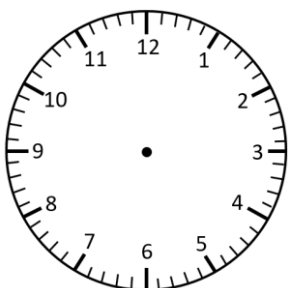
1 o'clock



half past 9



5 o'clock

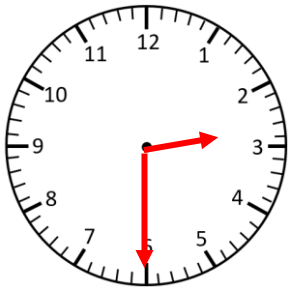


half past 12

Representing Time: Digital & Analogue **Answers**

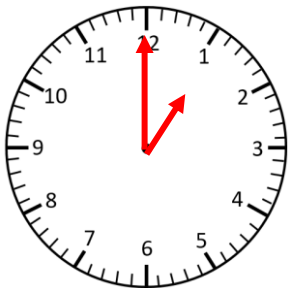
O'clock & Half Past

Read the times and represent in **analogue** and **digital** forms.



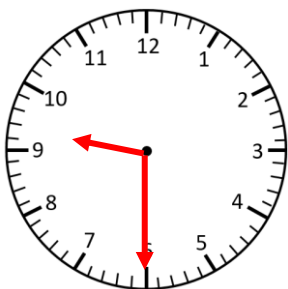
2:30

half past 2



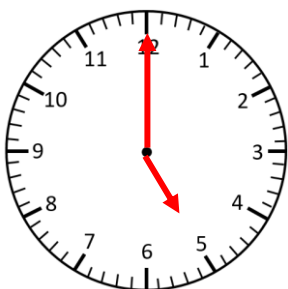
1:00

1 o'clock



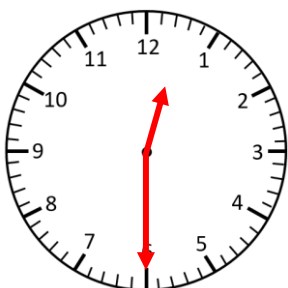
9:30

half past 9



5:00

5 o'clock



12:30

half past 12