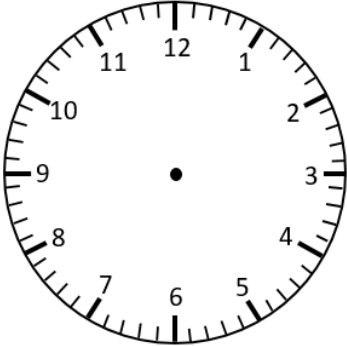


# Representing Digital Time on an Analogue Clock

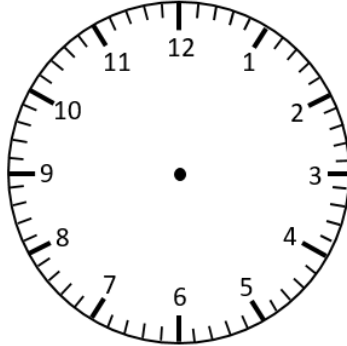
## 1-Minute Intervals

Draw the hands on the analogue clock to match the digital time.

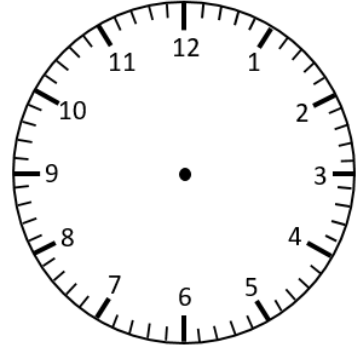
6:41



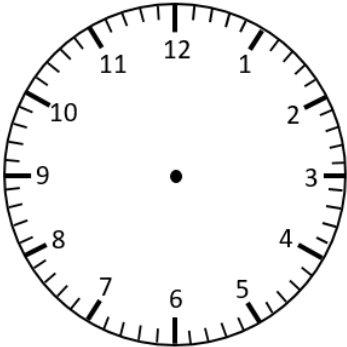
3:06



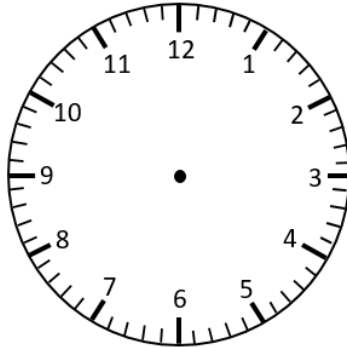
8:36



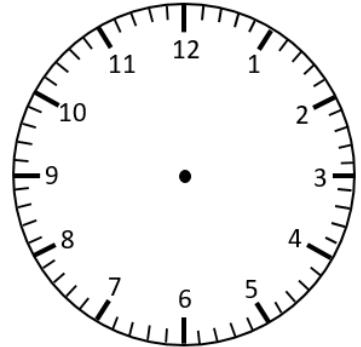
2:57



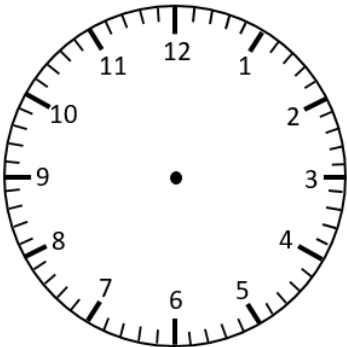
1:24



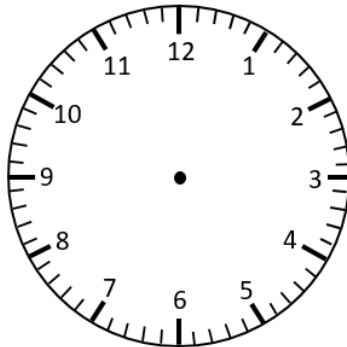
11:14



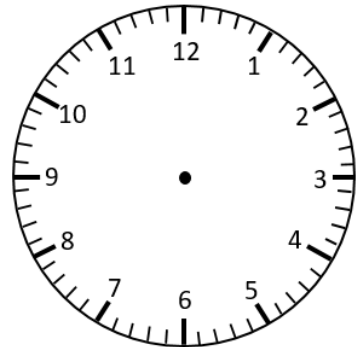
6:56



7:12

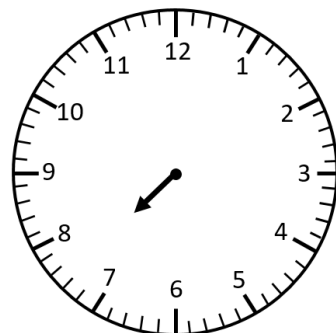


1:22



The minute hand is missing. Circle the time the clock is showing.

7:30 or 7:50

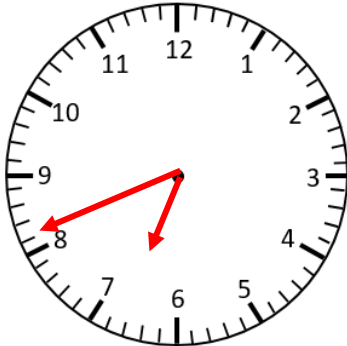


# Representing Digital Time on an Analogue Clock **Answers**

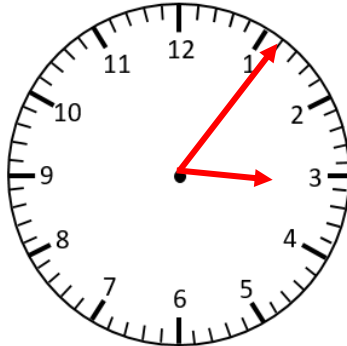
## 1-Minute Intervals

Draw the hands on the analogue clock to match the digital time.

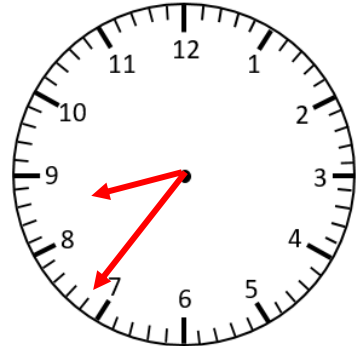
6:41



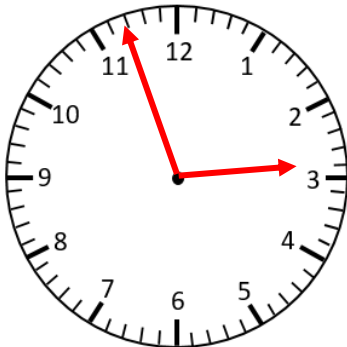
3:06



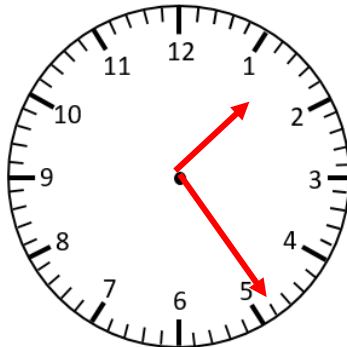
8:36



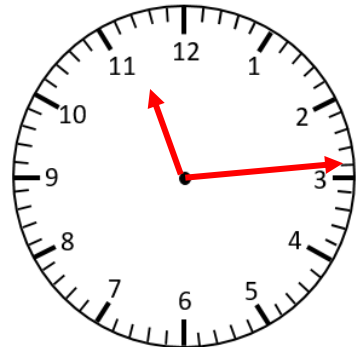
2:57



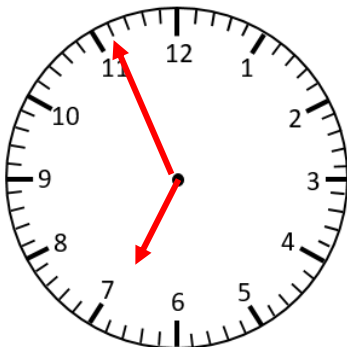
1:24



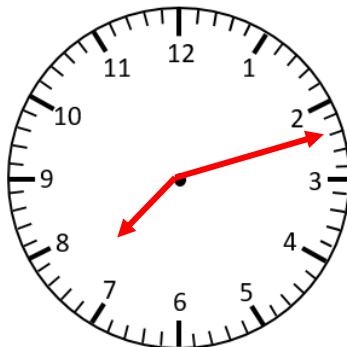
11:14



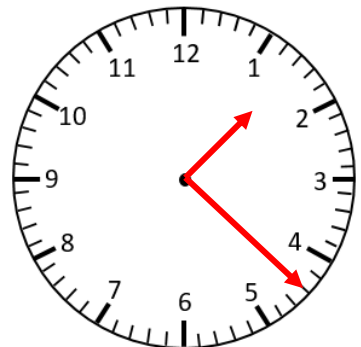
6:56



7:12



1:22



The minute hand is missing. Circle the time the clock is showing.

**7:30** or 7:50

