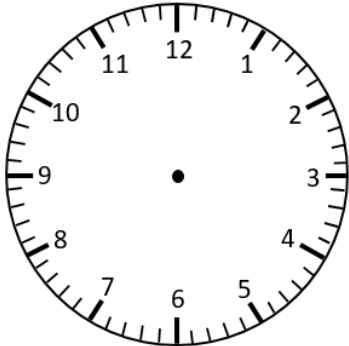


Representing Digital Time on an Analogue Clock

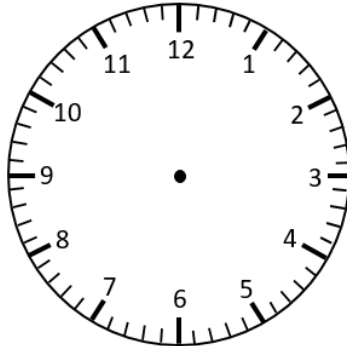
5-Minute Intervals

Draw the hands on the analogue clock to match the digital time.

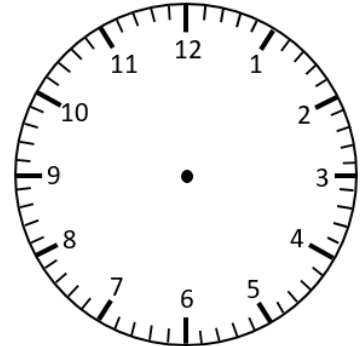
6:10



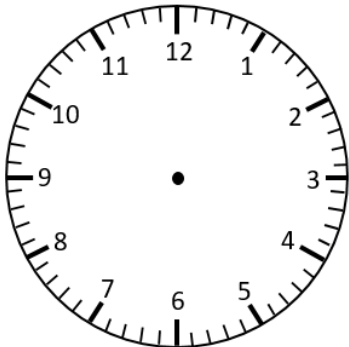
12:35



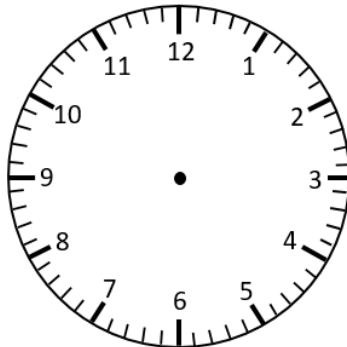
2:20



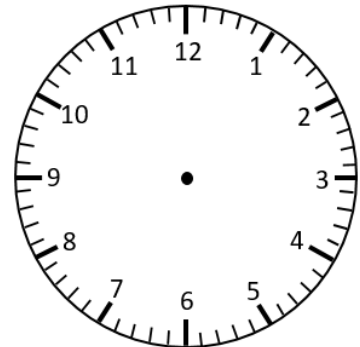
7:40



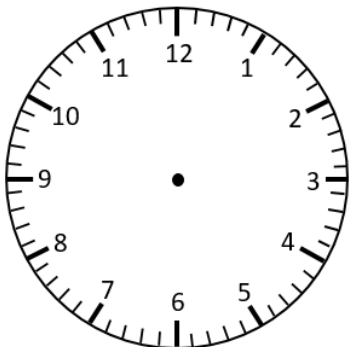
10:05



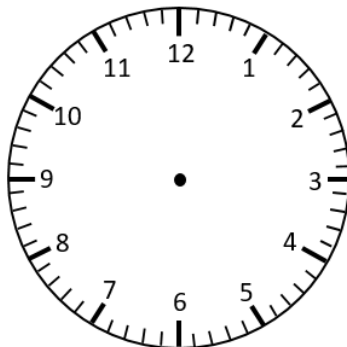
1:50



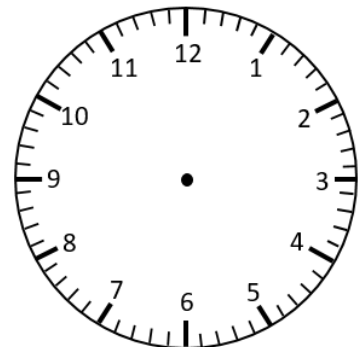
3:25



6:55

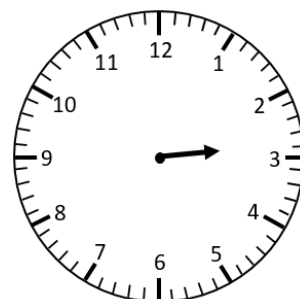


7:10



The minute hand is missing. Circle the time the clock is showing.
How do you know?

2:10 or 2:40

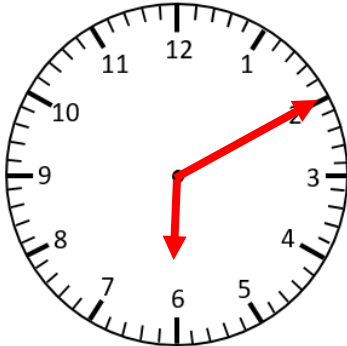


Representing Digital Time on an Analogue Clock

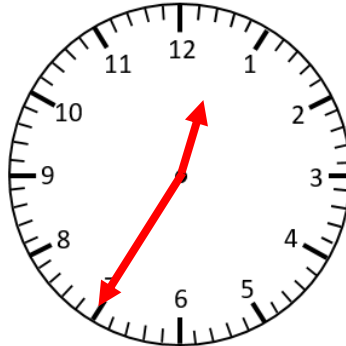
5-Minute Intervals **Answers**

Draw the hands on the analogue clock to match the digital time.

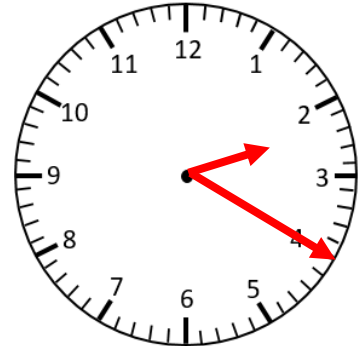
6:10



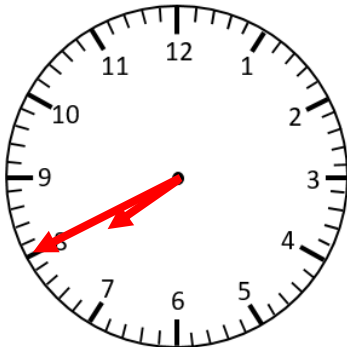
12:35



2:20



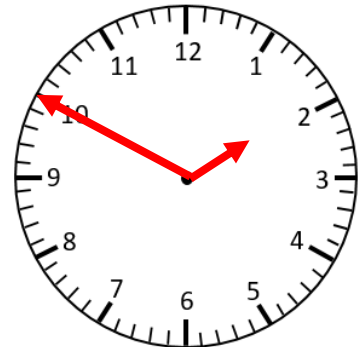
7:40



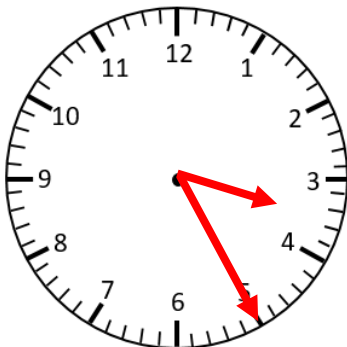
10:05



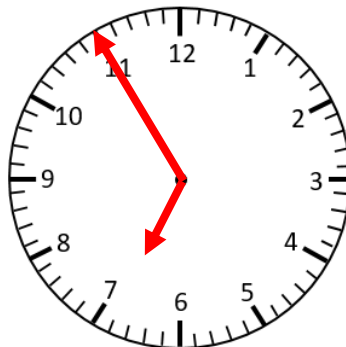
1:50



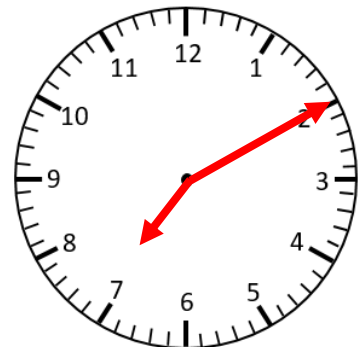
3:25



6:55



7:10



The minute hand is missing. Circle the time the clock is showing.

2:10 or **2:40**

