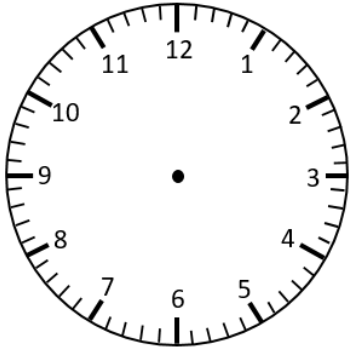


Representing Digital Time on an Analogue Clock

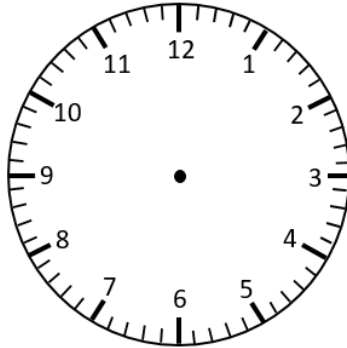
5-Minute Intervals

Draw the hands on the analogue clock to match the digital time.

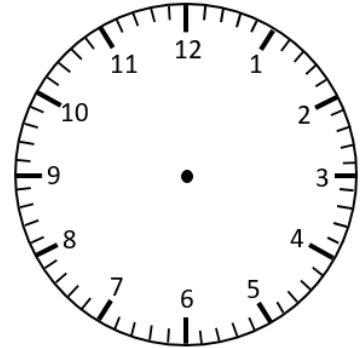
4:55



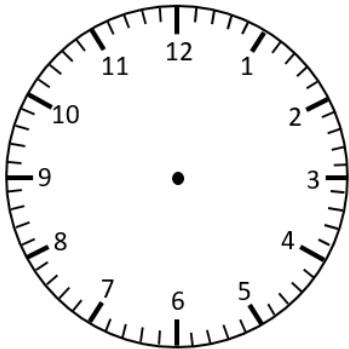
11:25



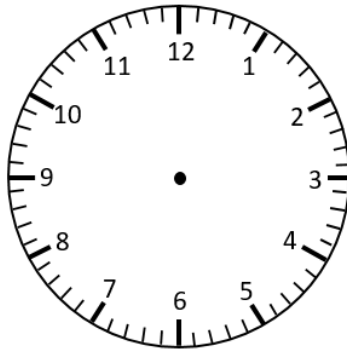
8:50



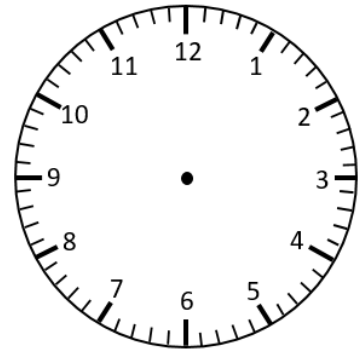
5:10



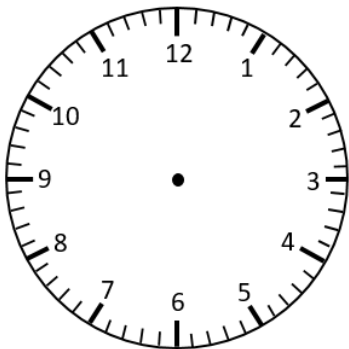
2:20



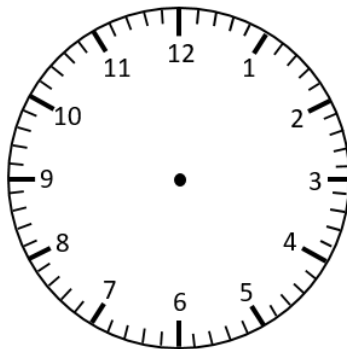
9:35



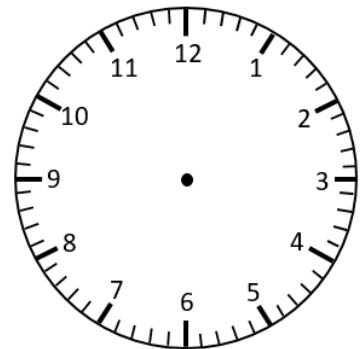
6:40



3:50

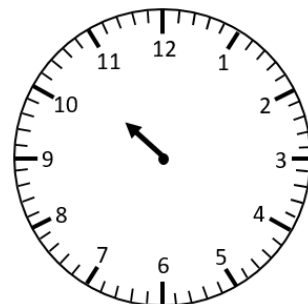


2:10



The minute hand is missing. Circle the time the clock is showing.
How do you know?

10:20 or 10:55

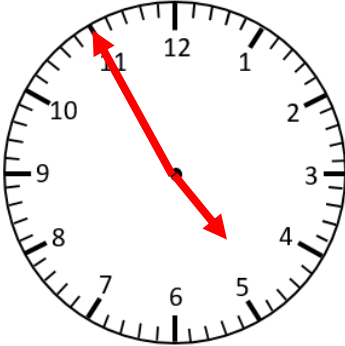


Representing Digital Time on an Analogue Clock

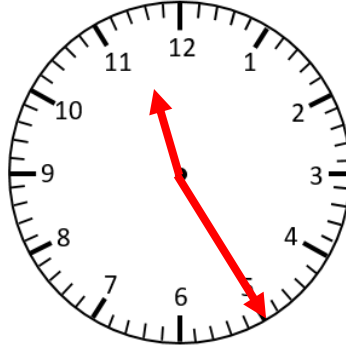
5-Minute Intervals **Answers**

Draw the hands on the analogue clock to match the digital time.

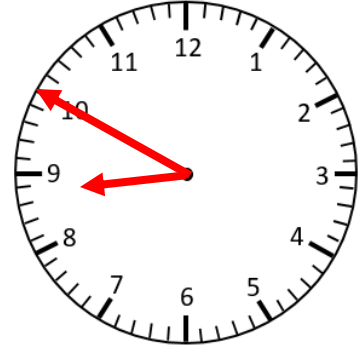
4:55



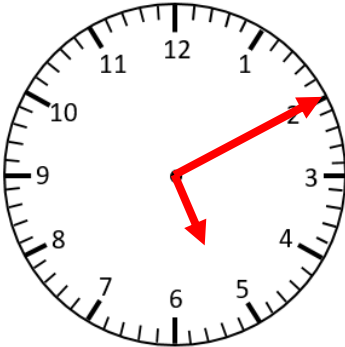
11:25



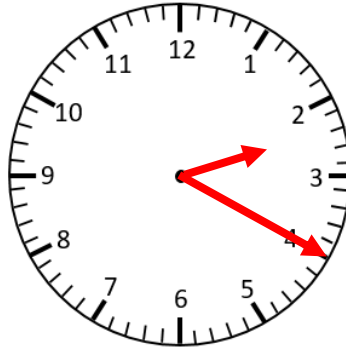
8:50



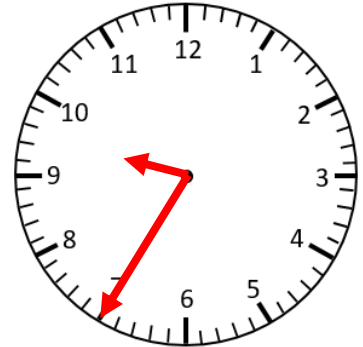
5:10



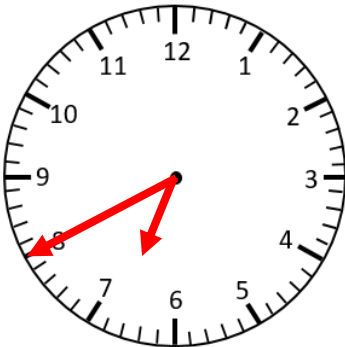
2:20



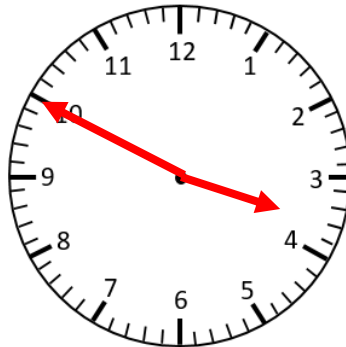
9:35



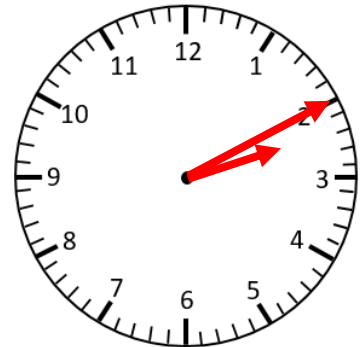
6:40



3:50



2:10



The minute hand is missing. Circle the time the clock is showing.

10:20 or 10:55

