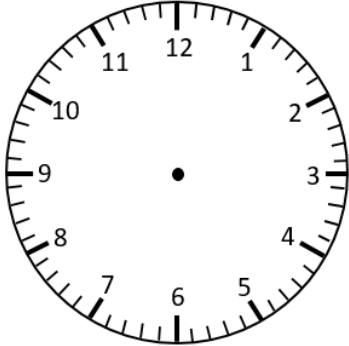


Representing Digital Time on an Analogue Clock

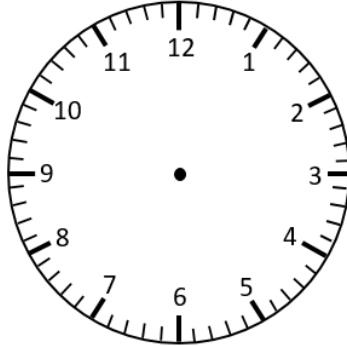
O'clock and Half Past

Draw the hands on the analogue clock to match the digital time.

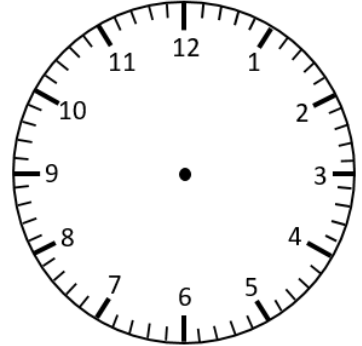
6:30



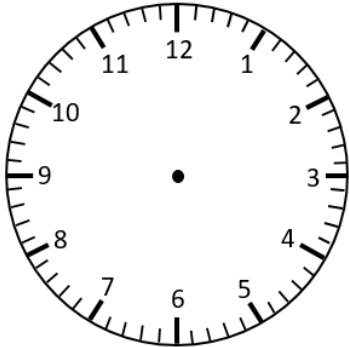
3:00



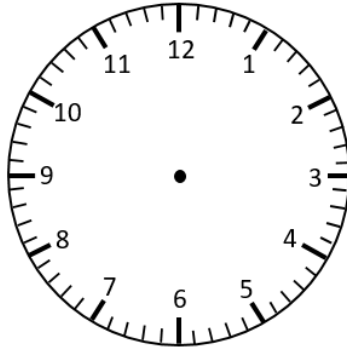
9:30



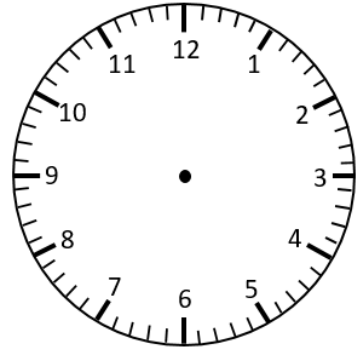
11:30



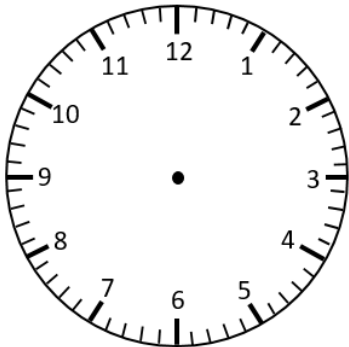
6:00



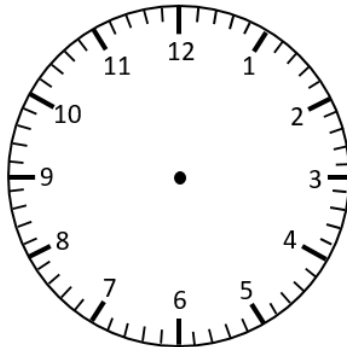
1:30



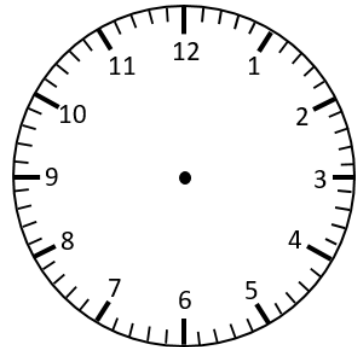
8:00



4:00

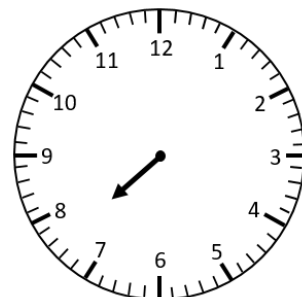


12:30



The minute hand is missing. Circle the time the clock is showing.
How do you know?

7:00 or 7:30

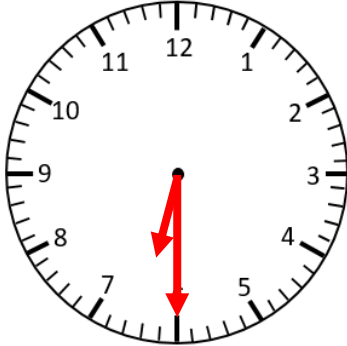


Representing Digital Time on an Analogue Clock

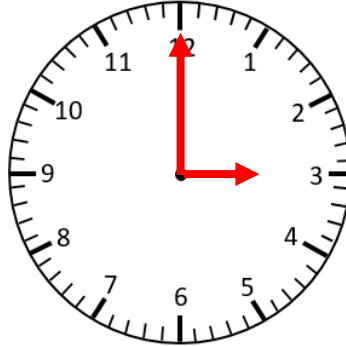
O'clock and Half Past **Answers**

Draw the hands on the analogue clock to match the digital time.

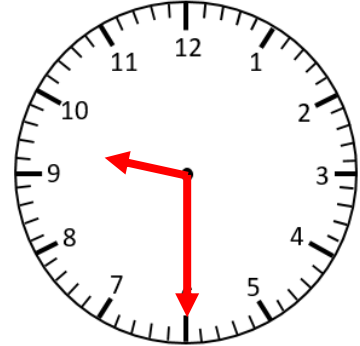
6:30



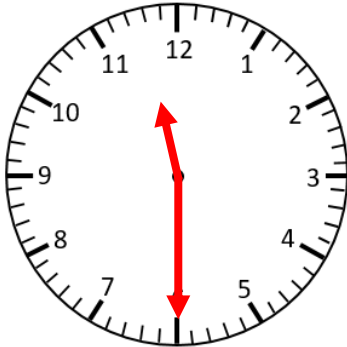
3:00



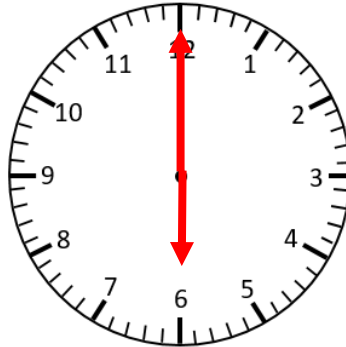
9:30



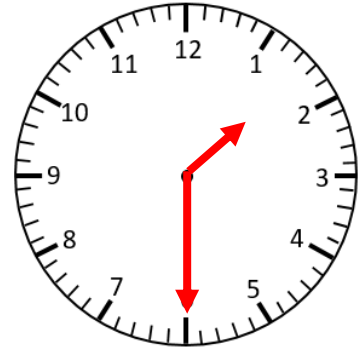
11:30



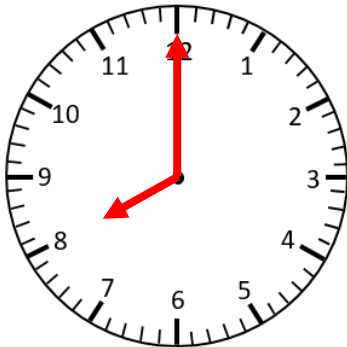
6:00



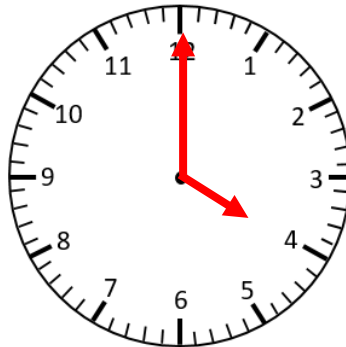
1:30



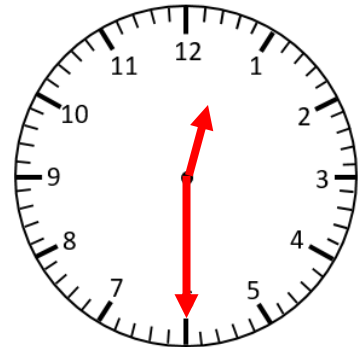
8:00



4:00



12:30



The minute hand is missing. Circle the time the clock is showing.
How do you know?

7:00 or **7:30**

