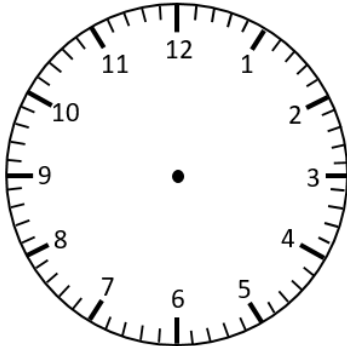


Representing Digital Time on an Analogue Clock

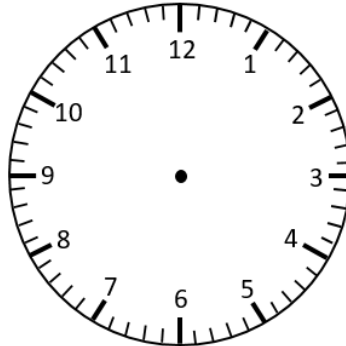
'Quarter past' and 'Quarter to'

Draw the hands on the analogue clock to match the digital time.

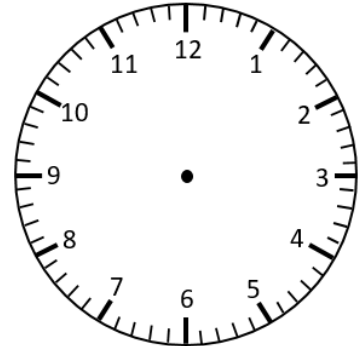
5:15



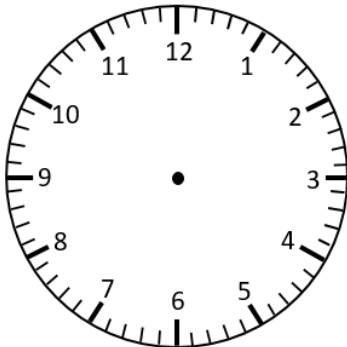
6:45



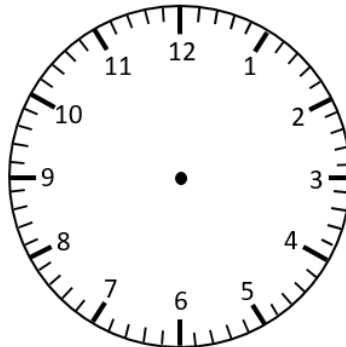
9:15



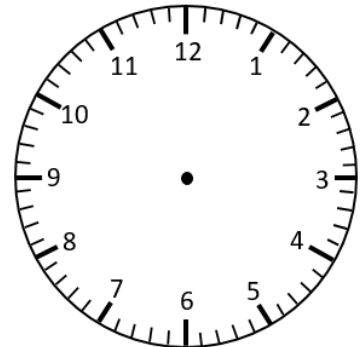
3:15



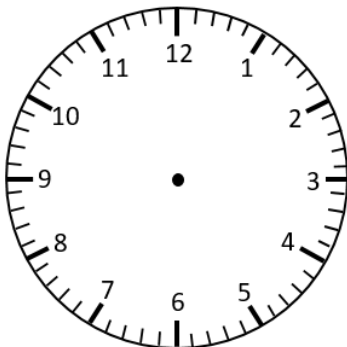
2:45



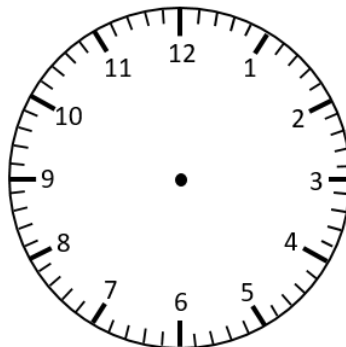
12:45



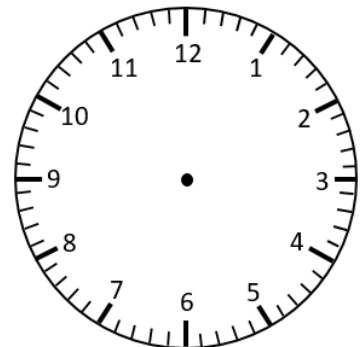
7:15



11:15

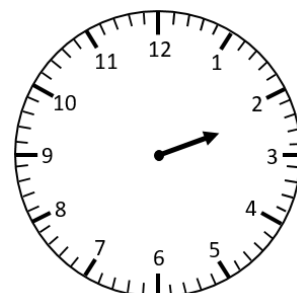


12:45



The minute hand is missing. Circle the time the clock is showing.
How do you know?

2:15 or 2:45

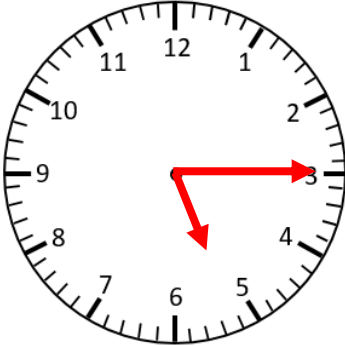


Representing Digital Time on an Analogue Clock

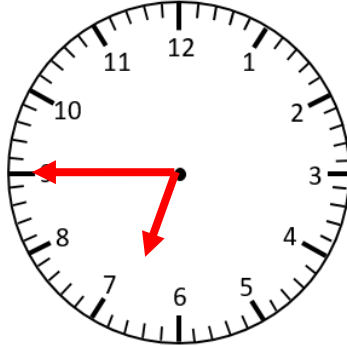
'Quarter past' and 'Quarter to' **Answers**

Draw the hands on the analogue clock to match the digital time.

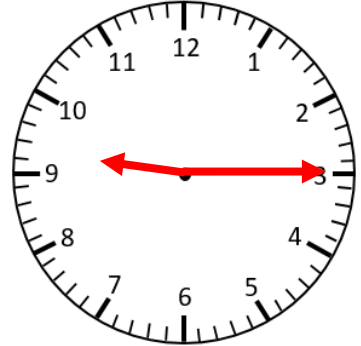
5:15



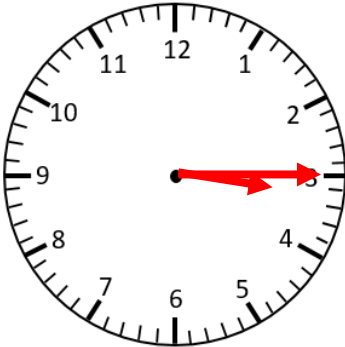
6:45



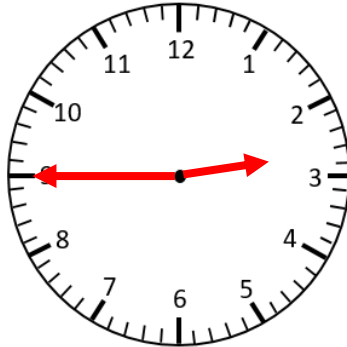
9:15



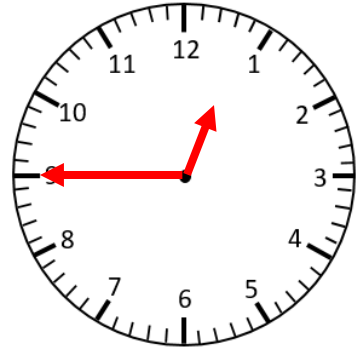
3:15



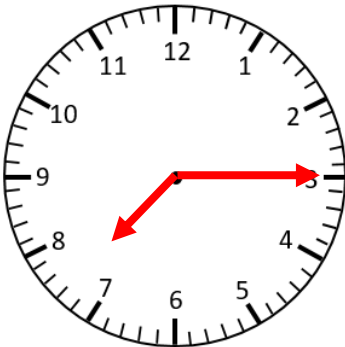
2:45



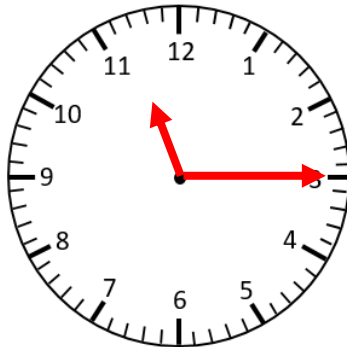
12:45



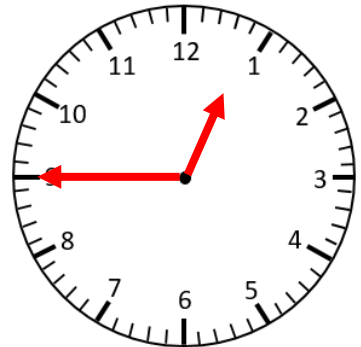
7:15



11:15



12:45



The minute hand is missing. Circle the time the clock is showing.
How do you know?

2:15 or 2:45

