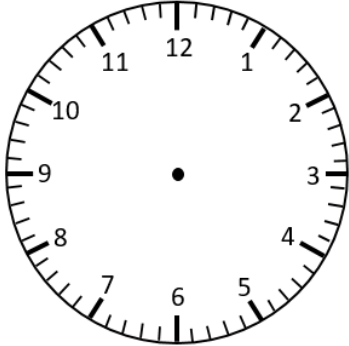


Representing Digital Time on an Analogue Clock

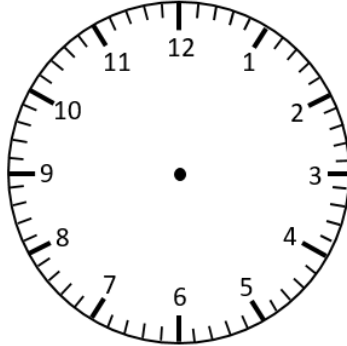
'Quarter past' and 'Quarter to'

Draw the hands on the analogue clock to match the digital time.

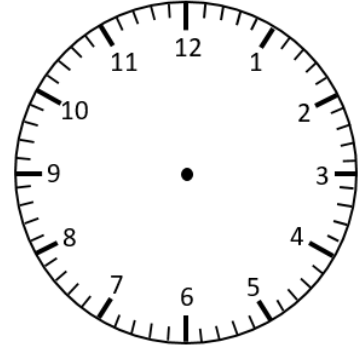
1:15



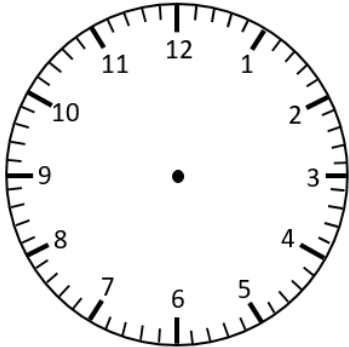
4:15



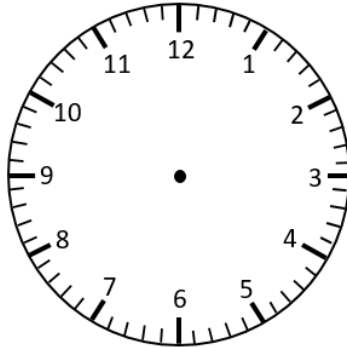
5:45



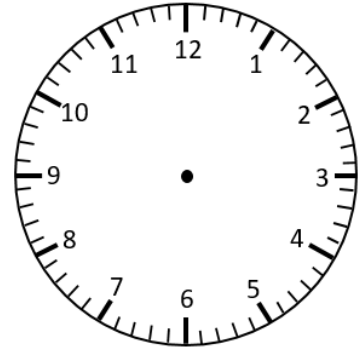
6:15



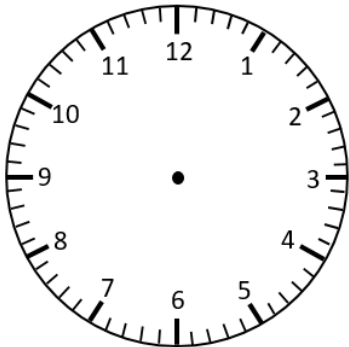
9:45



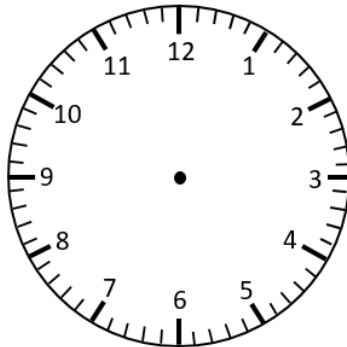
7:45



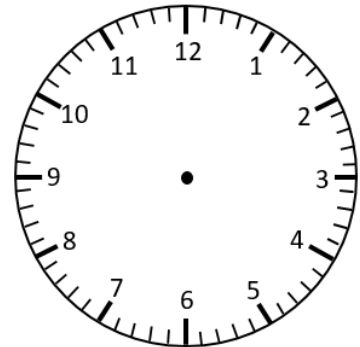
10:15



2:15

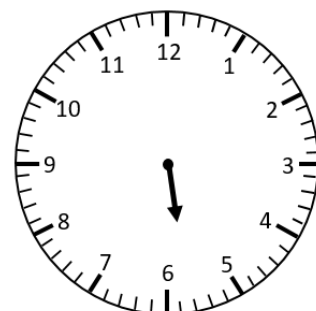


12:15



The minute hand is missing. Circle the time the clock is showing.
How do you know?

5:15 or 5:45

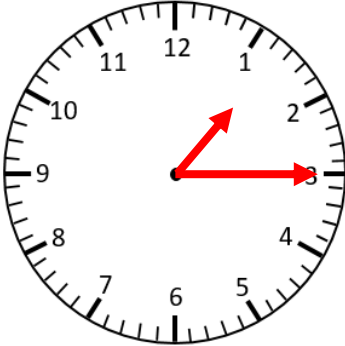


Representing Digital Time on an Analogue Clock

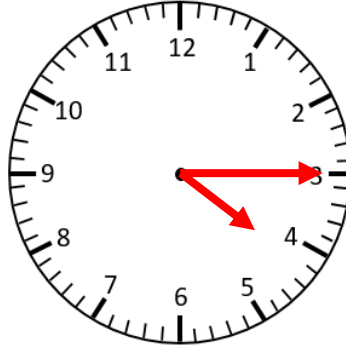
'Quarter past' and 'Quarter to' **Answers**

Draw the hands on the analogue clock to match the digital time.

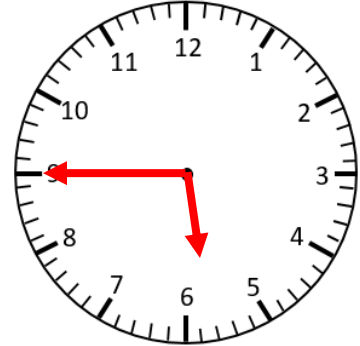
1:15



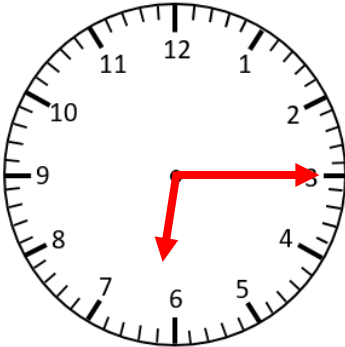
4:15



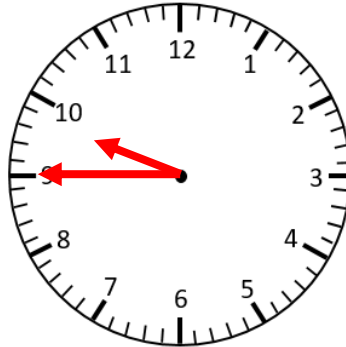
5:45



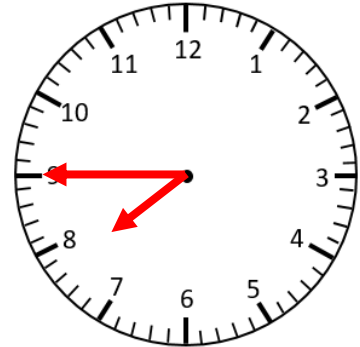
6:15



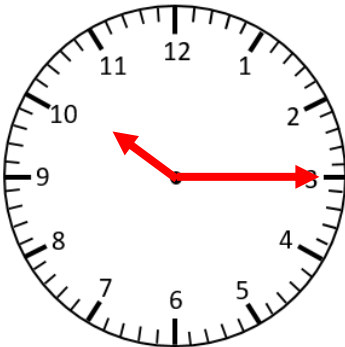
9:45



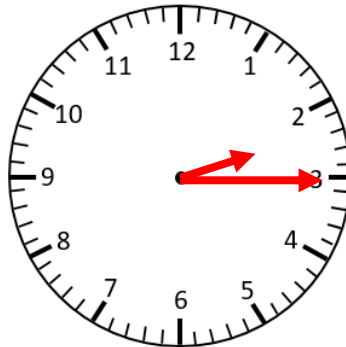
7:45



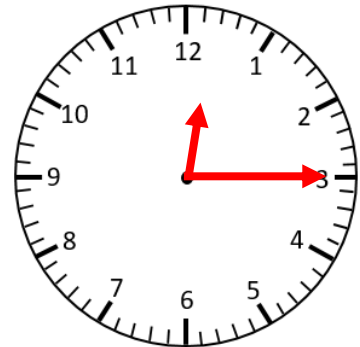
10:15



2:15



12:15



The minute hand is missing. Circle the time the clock is showing.
How do you know?

5:15 or **5:45**

