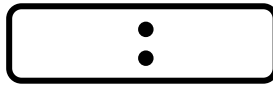
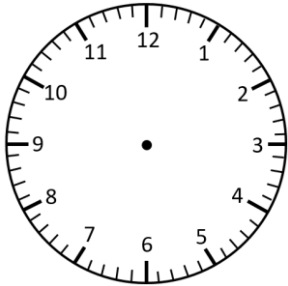


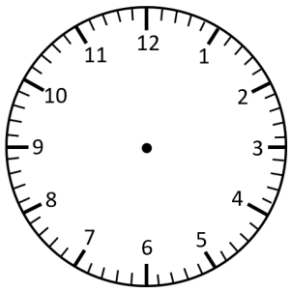
Representing Time- Analogue, Digital

Half Past

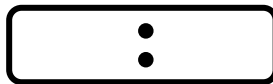
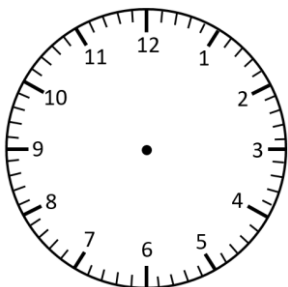
Read the times and represent in **analogue** and **digital** forms.



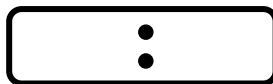
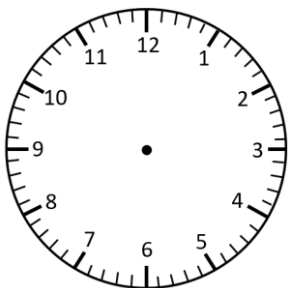
half past 4



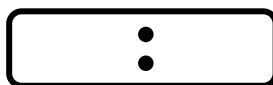
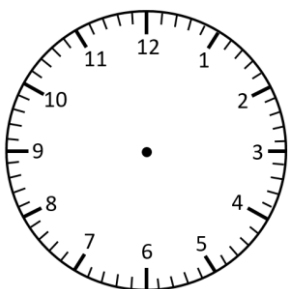
half past 1



half past 7



half past 12

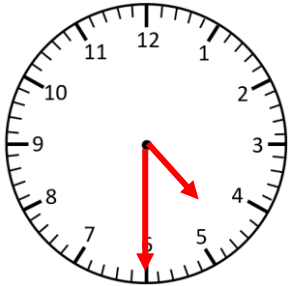


half past 11

Representing Time- Analogue, Digital **Answers**

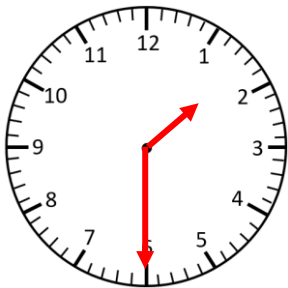
Half Past

Read the times and represent in **analogue** and **digital** forms.



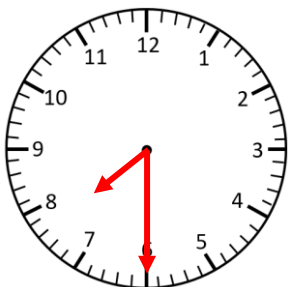
4:30

half past 4



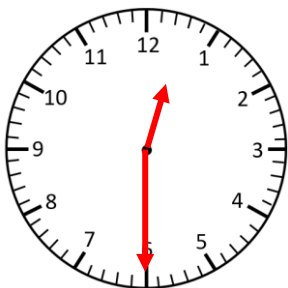
1:30

half past 1



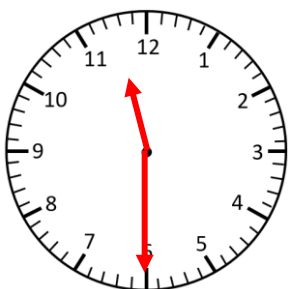
7:30

half past 7



12:30

half past 12



11:30

half past 11