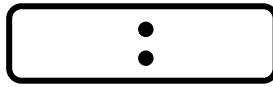
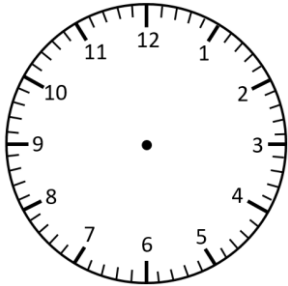


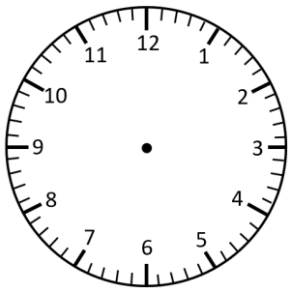
# Representing Time- Analogue, Digital

## O'clock and Half Past

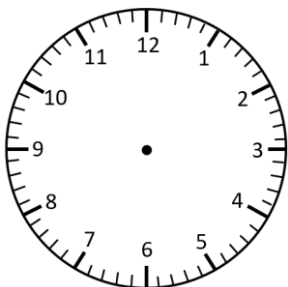
Read the times and represent in **analogue** and **digital** forms.



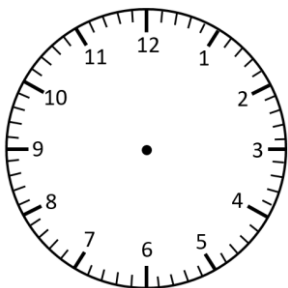
7 o'clock



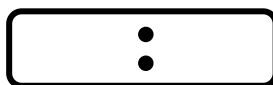
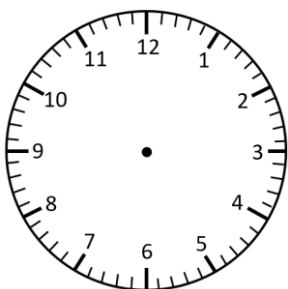
10 o'clock



6 o'clock



9 o'clock

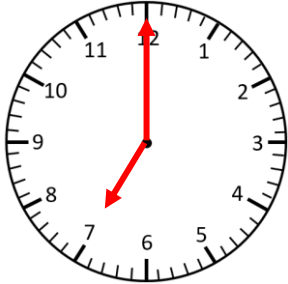


4 o'clock

# Representing Time- Analogue, Digital **Answers**

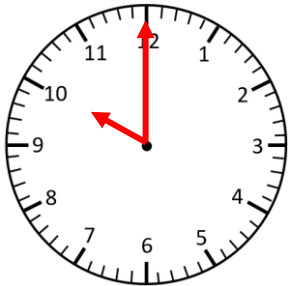
## O'clock and Half Past

Read the times and represent in **analogue** and **digital** forms.



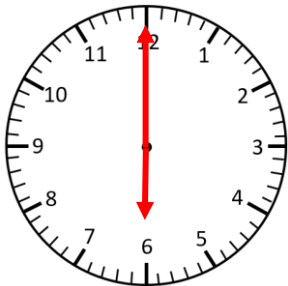
**7:00**

7 o'clock



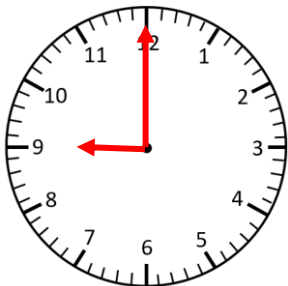
**10:00**

10 o'clock



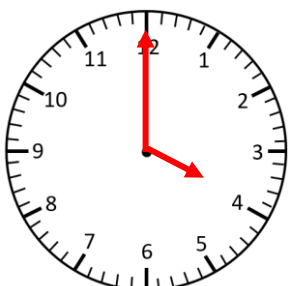
**6:00**

6 o'clock



**9:00**

9 o'clock



**4:00**

4 o'clock