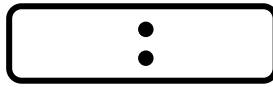
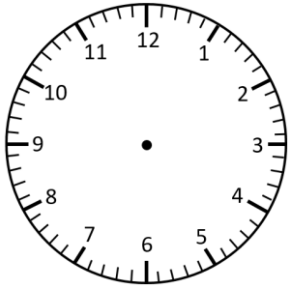


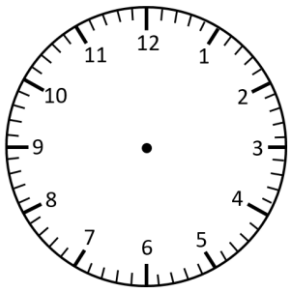
Representing Time- Analogue, Digital

O'clock and Half Past

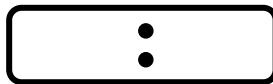
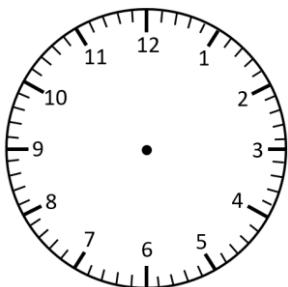
Read the times and represent in **analogue** and **digital** forms.



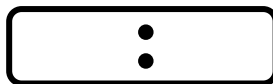
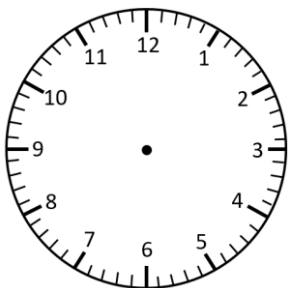
1 o'clock



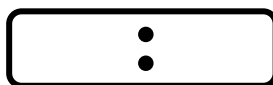
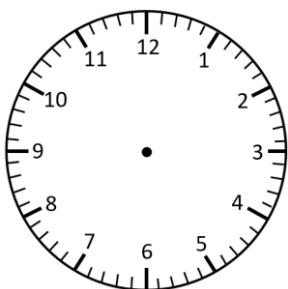
3 o'clock



5 o'clock



2 o'clock

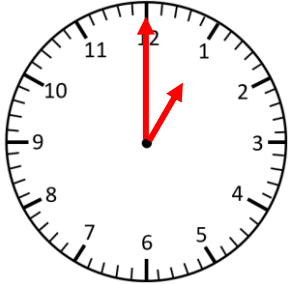


11 o'clock

Representing Time- Analogue, Digital **Answers**

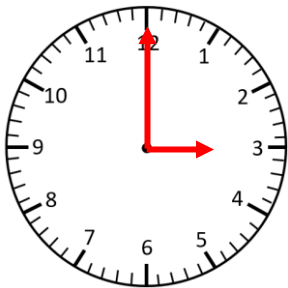
O'clock and Half Past

Read the times and represent in **analogue** and **digital** forms.



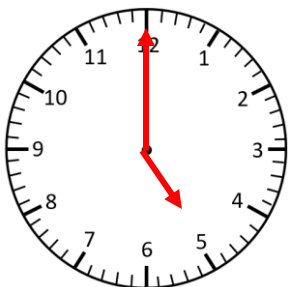
1:00

1 o'clock



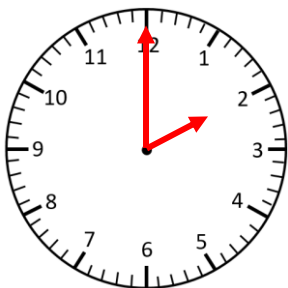
3:00

3 o'clock



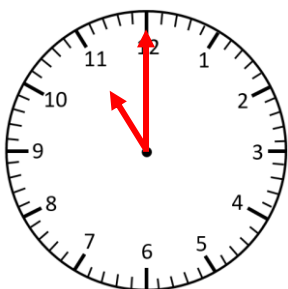
5:00

5 o'clock



2:00

2 o'clock



11:00

11 o'clock