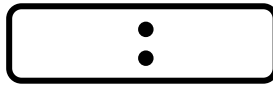
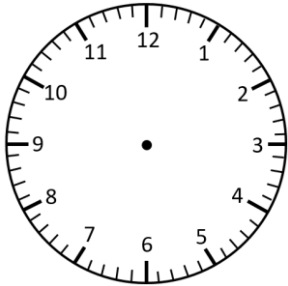


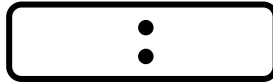
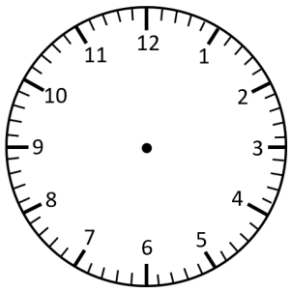
# Representing Time- Analogue, Digital

## O'clock and Half Past

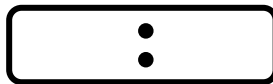
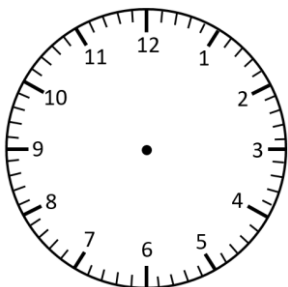
Read the times and represent in **analogue** and **digital** forms.



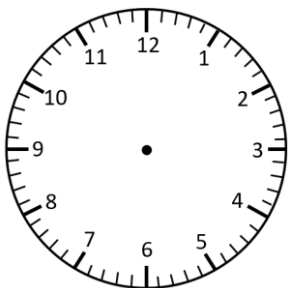
half past 6



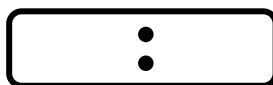
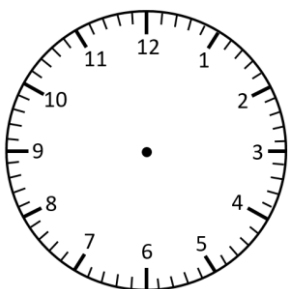
8 o'clock



half past 5



7 o'clock

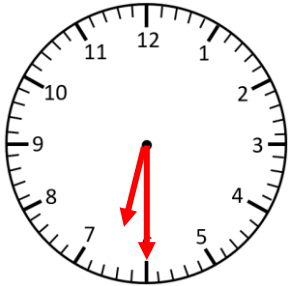


half past 7

# Representing Time- Analogue, Digital **Answers**

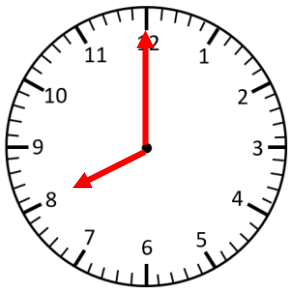
## O'clock and Half Past

Read the times and represent in **analogue** and **digital** forms.



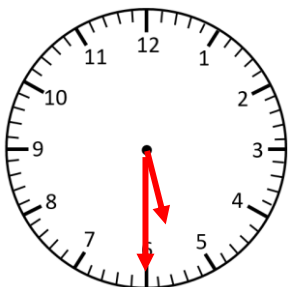
**6:30**

half past 6



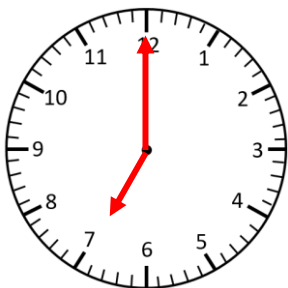
**8:00**

8 o'clock



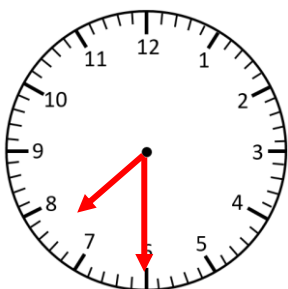
**5:30**

half past 5



**7:00**

7 o'clock



**7:30**

half past 7