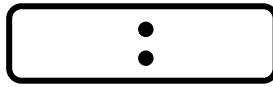
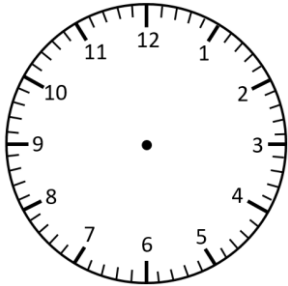


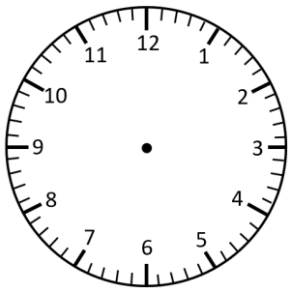
# Representing Time- Analogue, Digital

## Quarter past and Quarter to

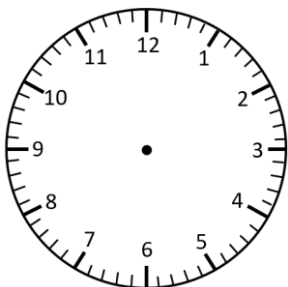
Read the times and represent in **analogue** and **digital** forms.



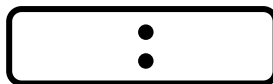
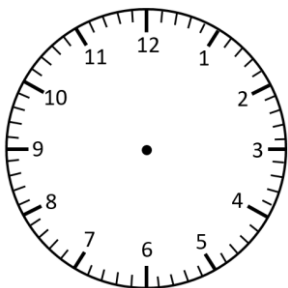
quarter past 12



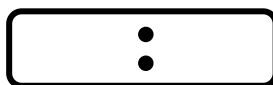
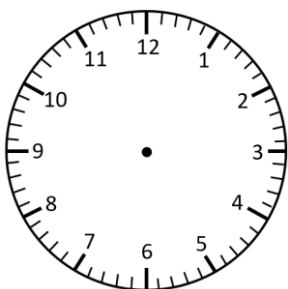
quarter past 12



quarter to 12



quarter to 12

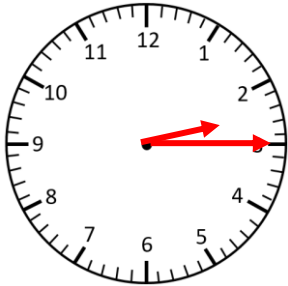


quarter past 12

# Representing Time- Analogue, Digital **Answers**

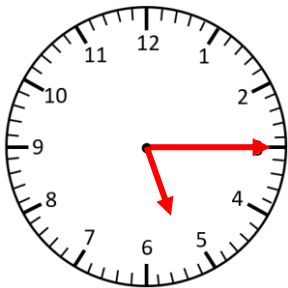
## Quarter past and Quarter to

Read the times and represent in **analogue** and **digital** forms.



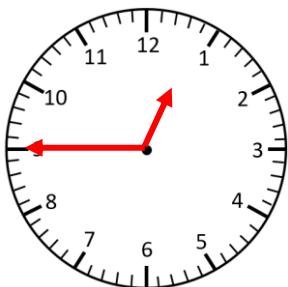
**2:15**

quarter past 2



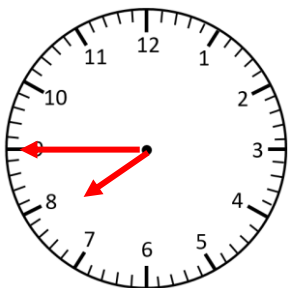
**5:15**

quarter past 5



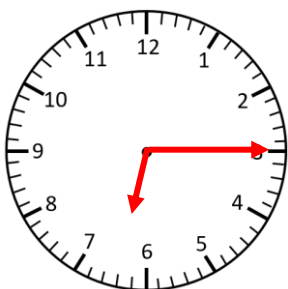
**12:45**

quarter to 1



**7:45**

quarter to 8



**6:15**

quarter past 6