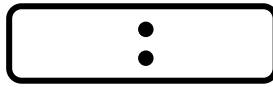
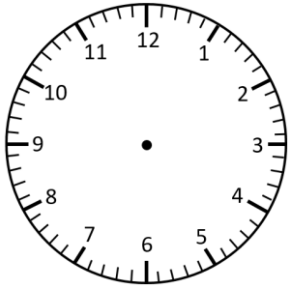


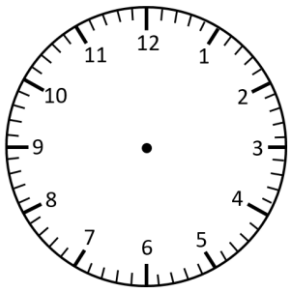
Representing Time- Analogue, Digital

Quarter past and Quarter to

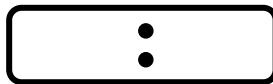
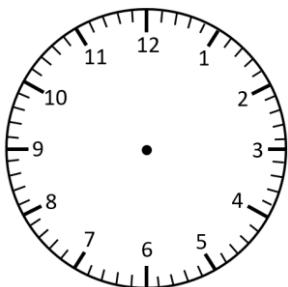
Read the times and represent in **analogue** and **digital** forms.



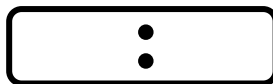
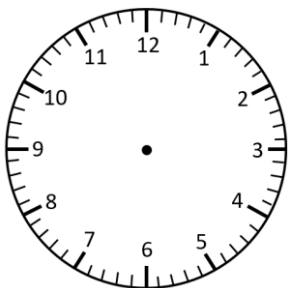
quarter to 3



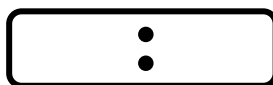
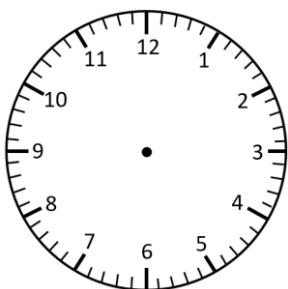
quarter past 7



quarter past 1



quarter to 11

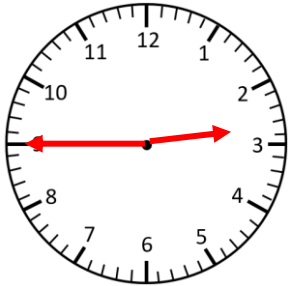


quarter to 2

Representing Time- Analogue, Digital **Answers**

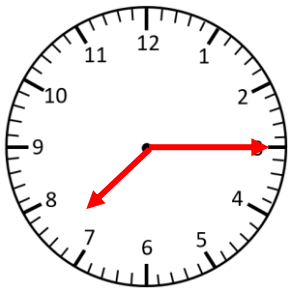
Quarter past and Quarter to

Read the times and represent in **analogue** and **digital** forms.



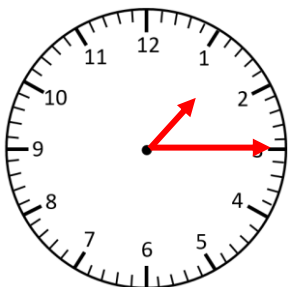
2:45

quarter to 3



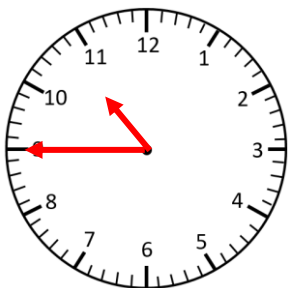
7:15

quarter past 7



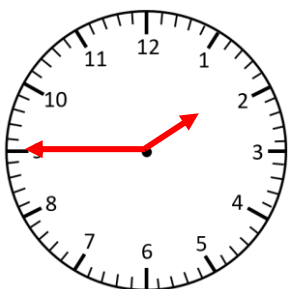
1:15

quarter past 1



10:45

quarter to 11



1:45

quarter to 2