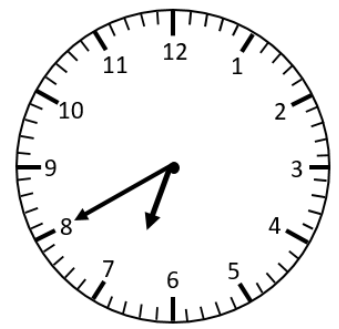
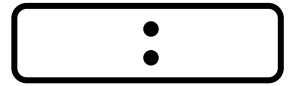
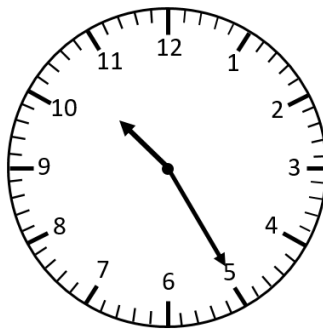
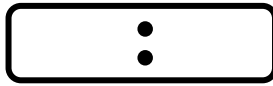
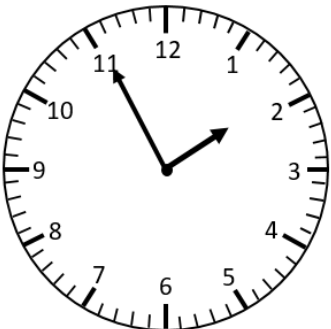
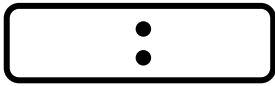
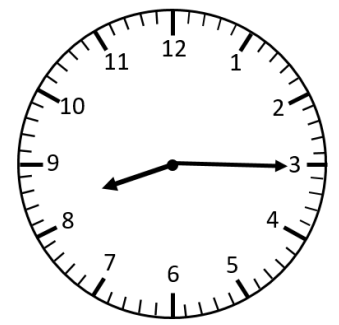
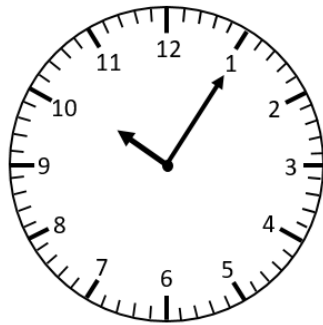
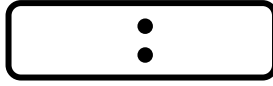
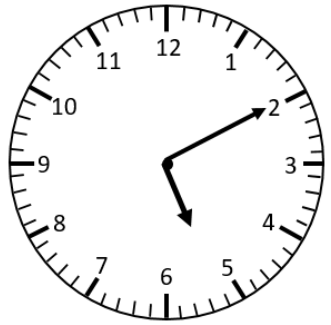
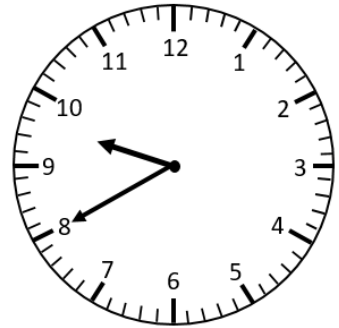
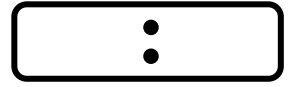
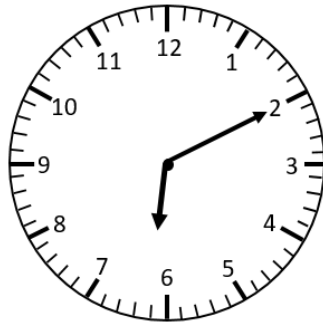
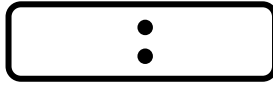
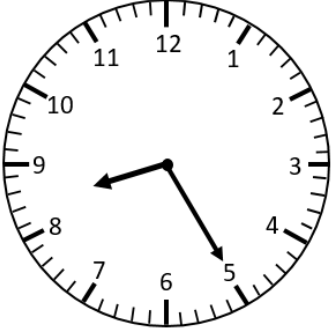
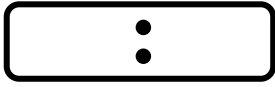


# Representing Analogue Time on a Digital Clock

## 5-Minute Intervals

Write the time on the digital clocks to match the time shown on the analogue clocks.



What is something that takes...

...about an hour?

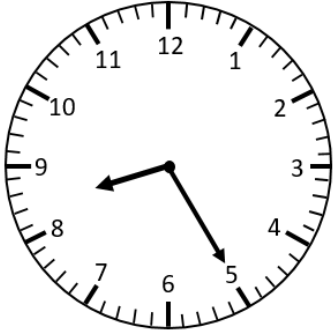
...about 2 hours?

# Representing Analogue Time on a Digital Clock **Answers**

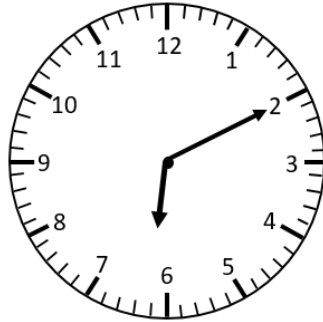
## 5-Minute Intervals

Write the time on the digital clocks to match the time shown on the analogue clocks.

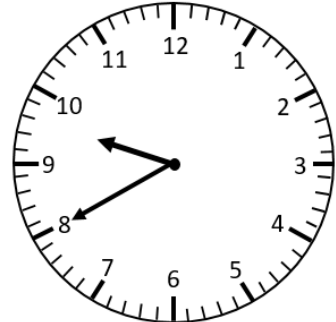
**8:25**



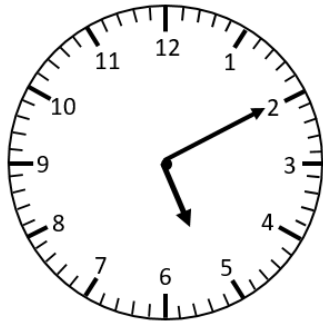
**6:10**



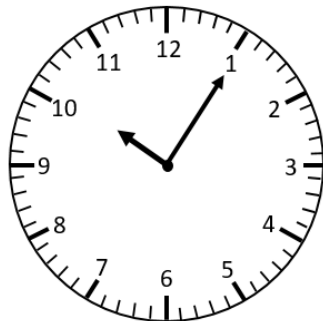
**9:40**



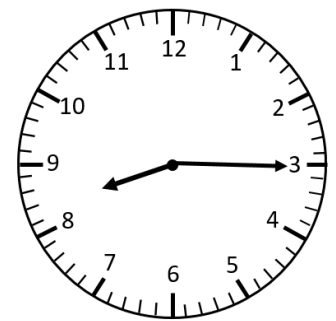
**5:10**



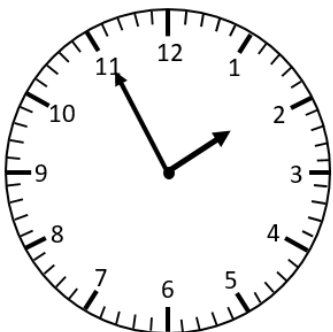
**10:05**



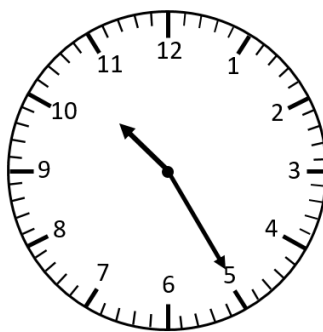
**8:15**



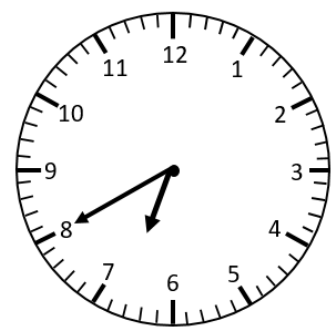
**1:55**



**10:25**



**6:40**



What is something that takes...

...about an hour?

...about 2 hours?