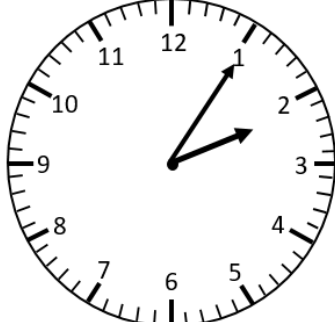
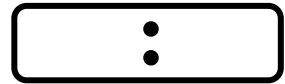
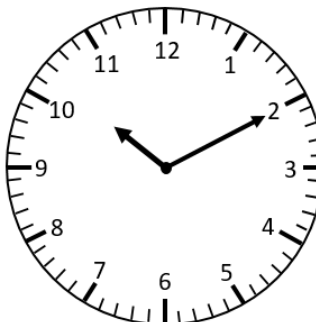
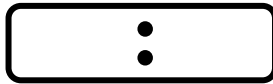
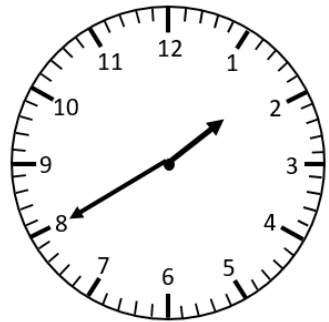
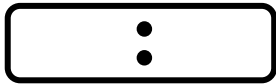
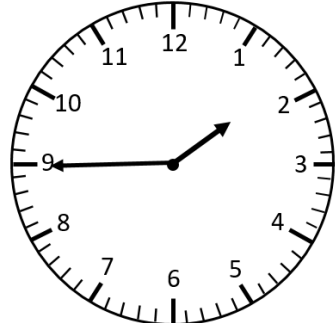
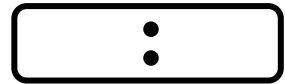
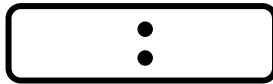
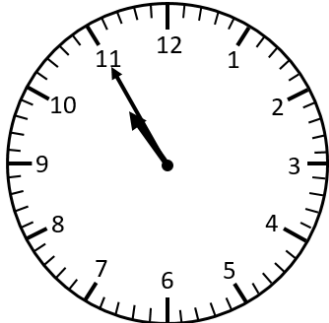
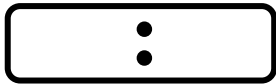
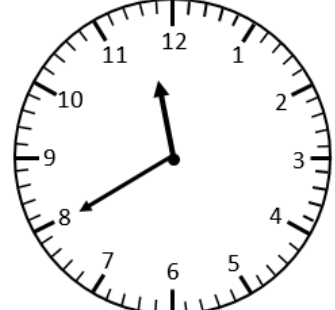
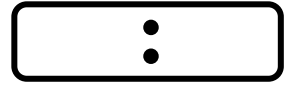
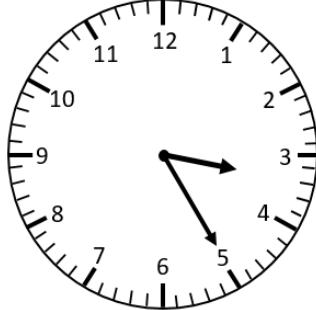
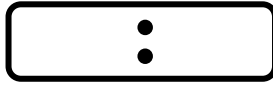
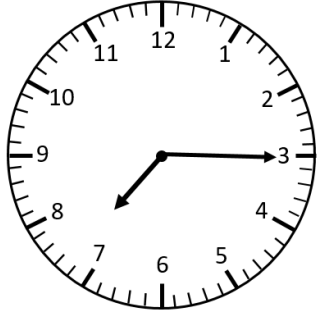
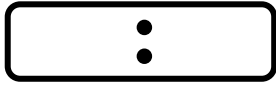


Representing Analogue Time on a Digital Clock

5-Minute Intervals

Write the time on the digital clocks to match the time shown on the analogue clocks.



What is something that takes...

...about an hour?

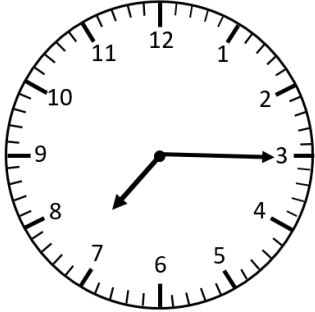
...about 2 hours?

Representing Analogue Time on a Digital Clock **Answers**

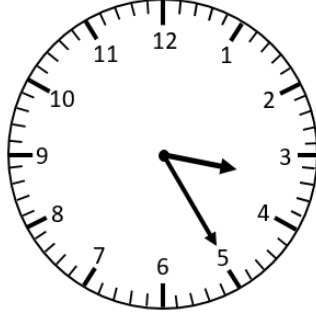
5-Minute Intervals

Write the time on the digital clocks to match the time shown on the analogue clocks.

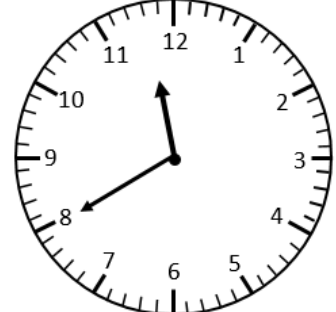
7:15



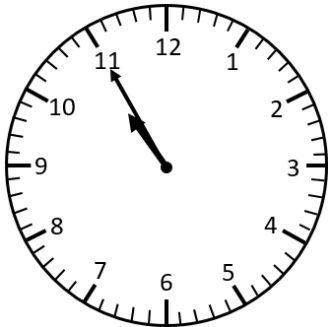
3:25



11:40



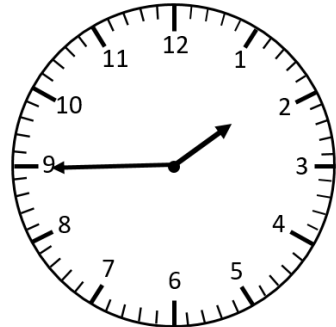
10:55



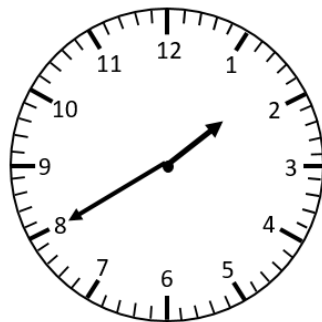
4:55



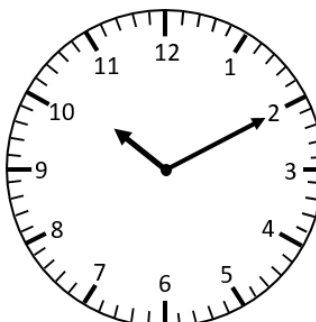
1:45



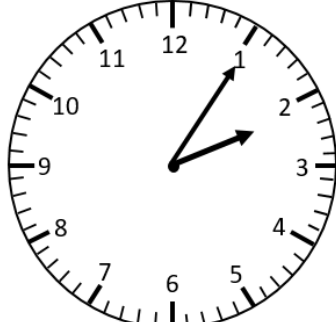
1:40



10:10



2:05



What is something that takes...

...about an hour?

...about 2 hours?