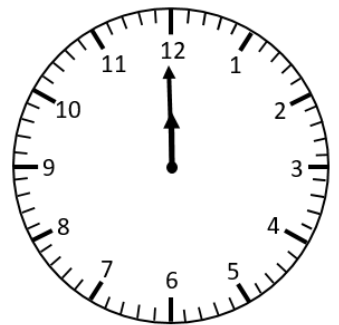
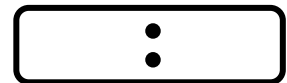
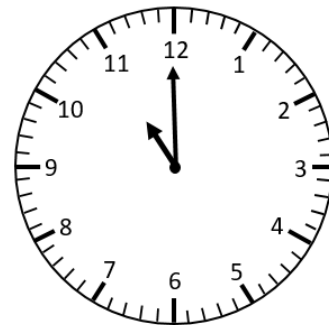
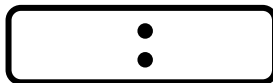
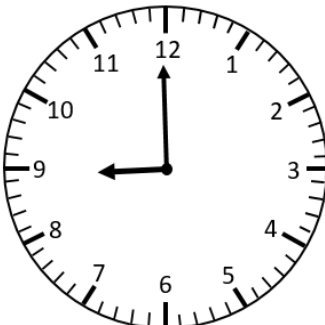
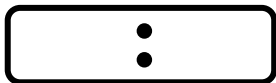
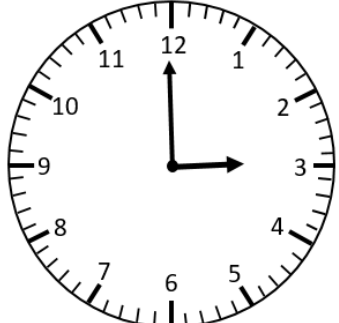
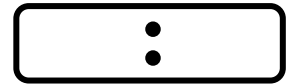
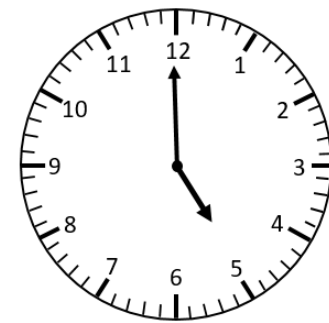
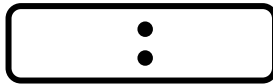
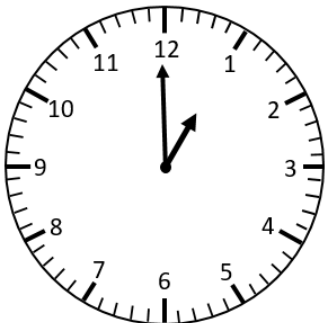
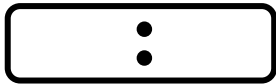
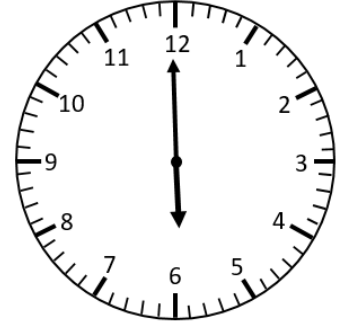
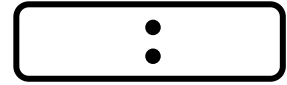
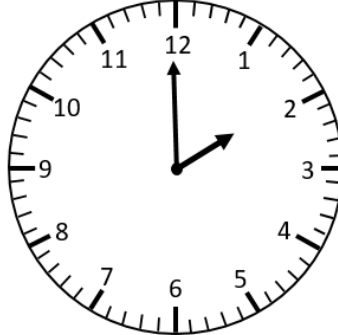
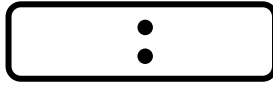
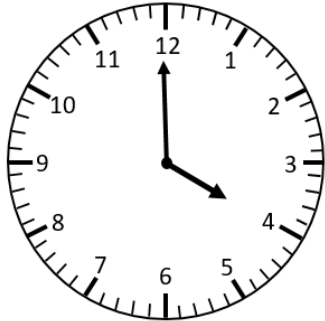
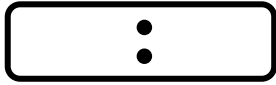


Representing Analogue Time on a Digital Clock

O'clock

Write the time on the digital clocks to match the time shown on the analogue clocks.



What is something that takes...

...about a second?

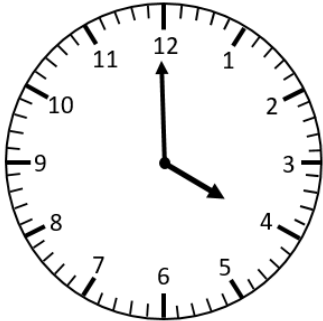
...about a minute?

Representing Analogue Time on a Digital Clock **Answers**

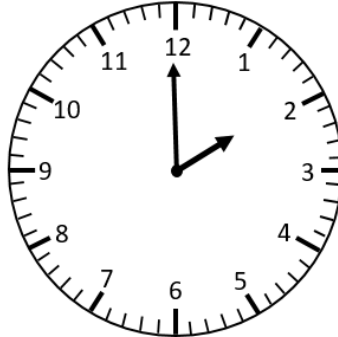
O'clock

Write the time on the digital clocks to match the time shown on the analogue clocks.

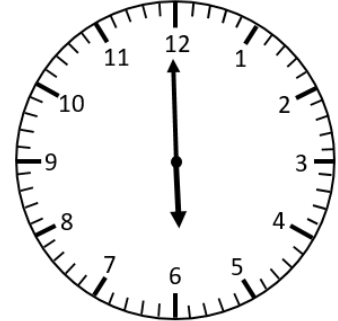
4:00



2:00



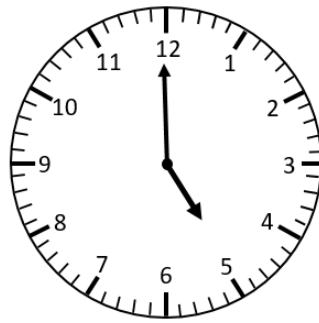
6:00



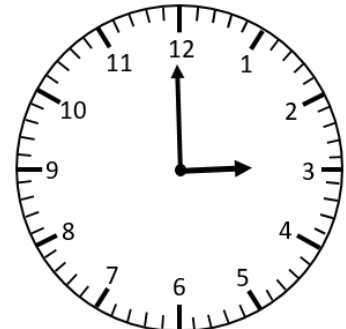
1:00



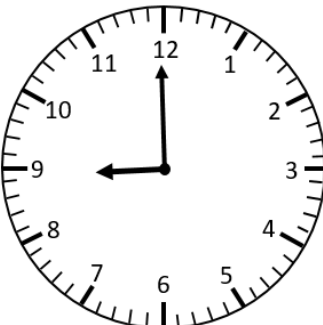
5:00



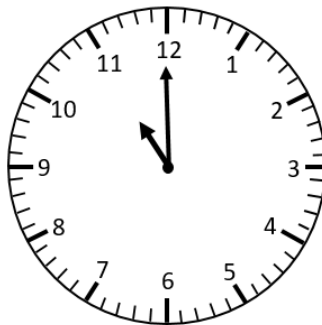
3:00



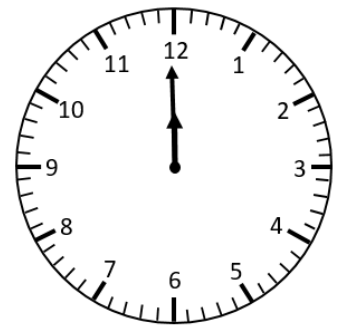
9:00



11:00



12:00



What is something that takes...

...about a second?

...about a minute?