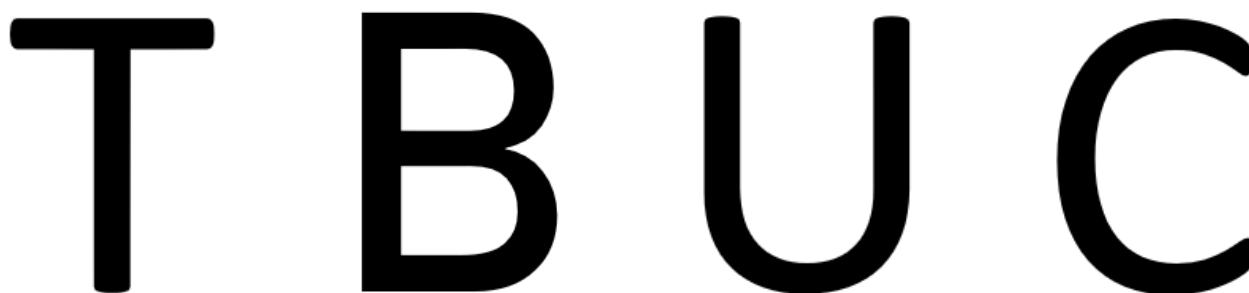


Symmetry

1) Do the dotted lines on each shape represent its line of symmetry? If not, draw the correct one in.



Draw dotted lines to show lines of symmetry on the following letters.



One of the following letters has more lines of symmetry than the others? Which one is it? Draw them in!

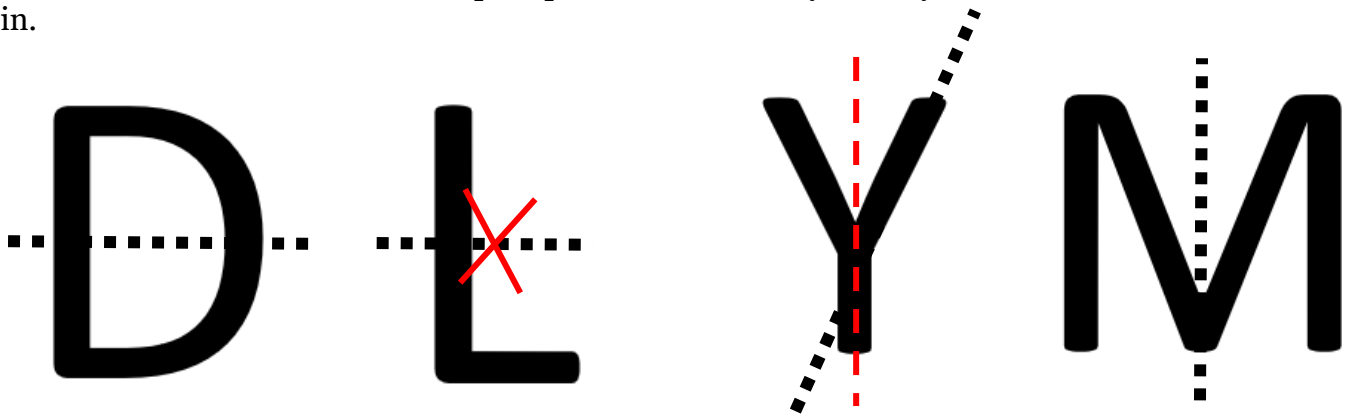


Complete the following symmetrical shapes. What letters have you created?

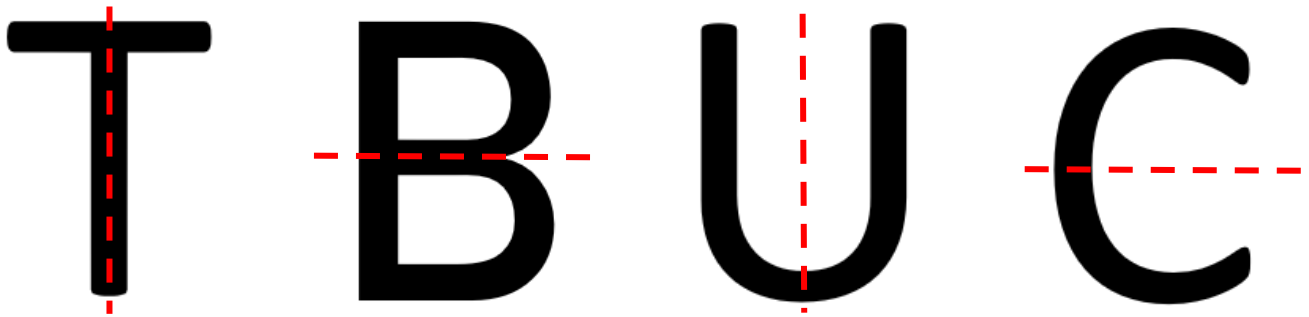


Symmetry Answers

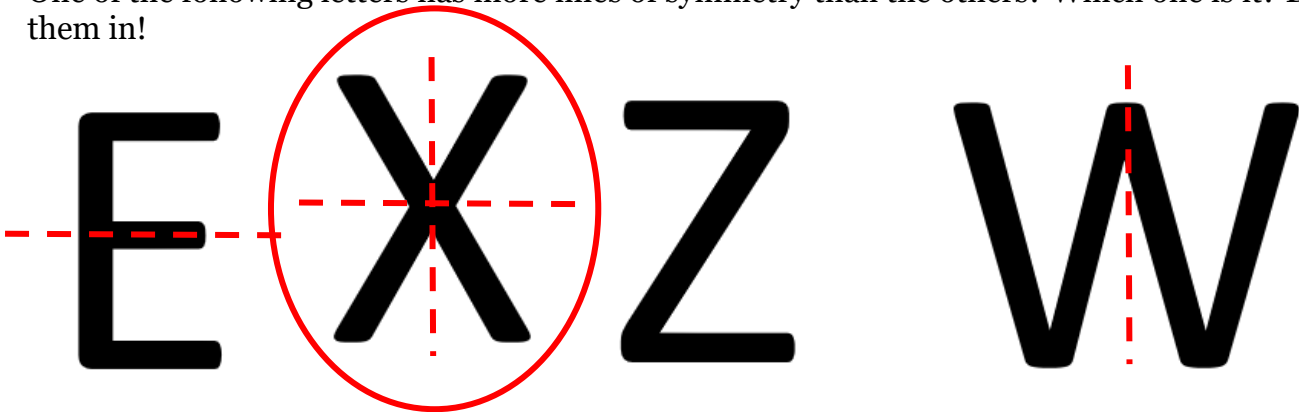
1) Do the dotted lines on each shape represent its line of symmetry? If not, draw the correct one in.



Draw dotted lines to show lines of symmetry on the following letters.



One of the following letters has more lines of symmetry than the others? Which one is it? Draw them in!



Complete the following symmetrical shapes. What letters have you created?

