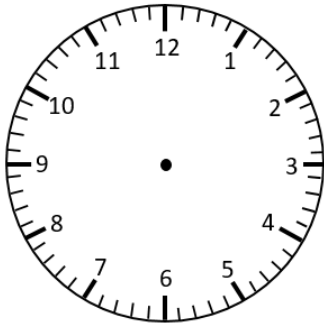
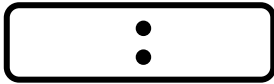


Representing Time on Digital & Analogue Clocks

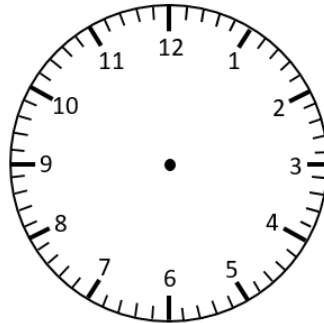
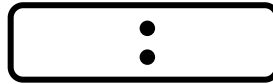
1 Minute Intervals

Write the time on the digital clocks to match the time shown on the analogue clocks.

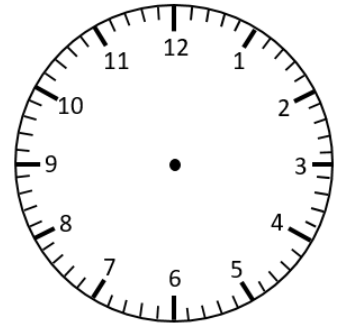
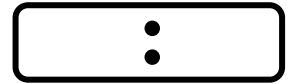
twenty-three past 10



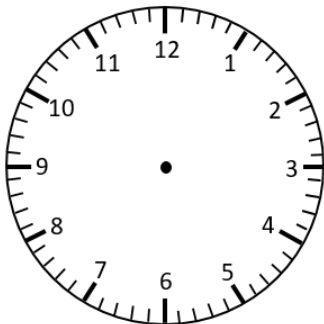
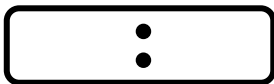
four minutes past 5



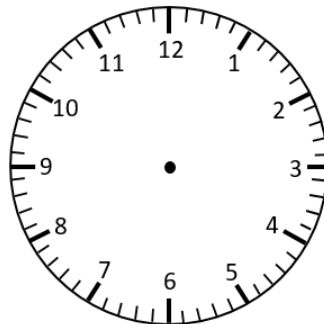
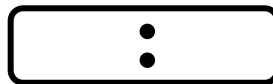
thirteen past 6



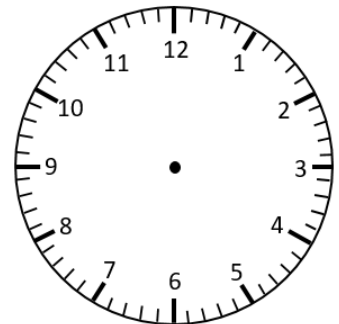
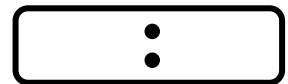
twenty-seven to 10



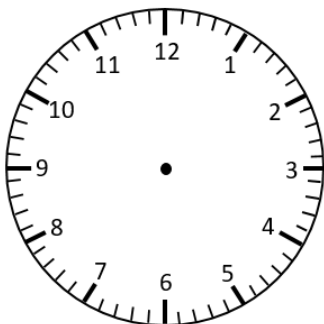
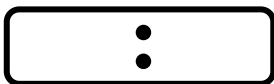
twenty-nine past 8



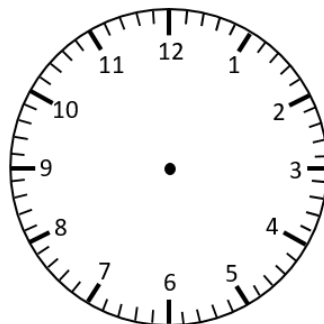
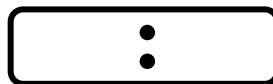
twenty-two to 6



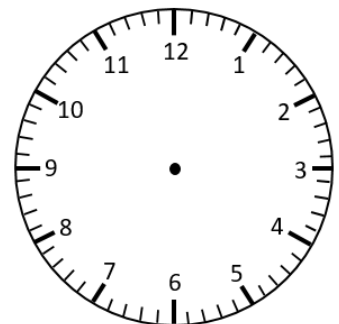
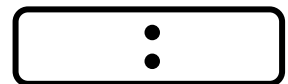
eight minutes to 8



twenty-three past 3



seventeen minutes to 5



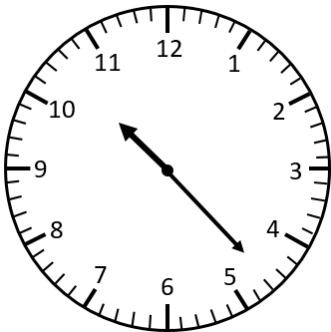
Representing Time on Digital & Analogue Clocks

1 Minute Intervals **Answers**

Write the time on the digital clocks to match the time shown on the analogue clocks.

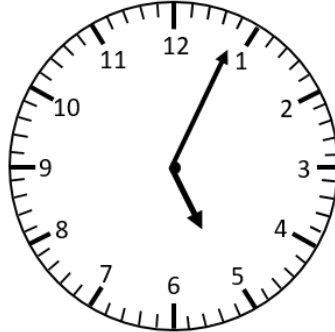
twenty-three past 10

10:23



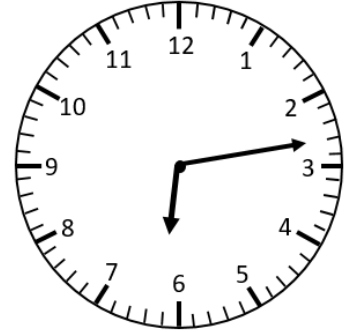
four minutes past 5

5:04



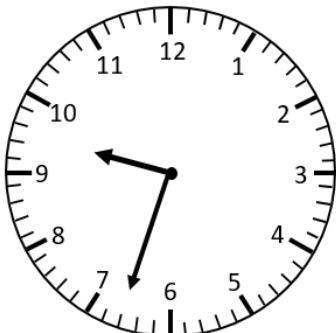
thirteen past 6

6:13



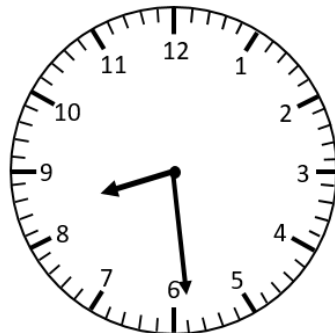
twenty-seven to 10

9:33



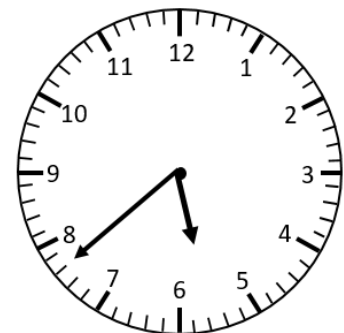
twenty-nine past 8

8:29



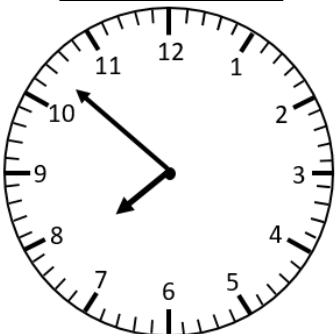
twenty-two to 6

5:38



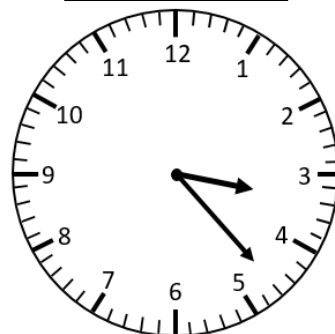
eight minutes to 8

7:52



twenty-three past 3

3:23



seventeen minutes to 5

4:43

