

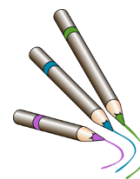
Identifying Rhyming Words

Rhyme families:

-an

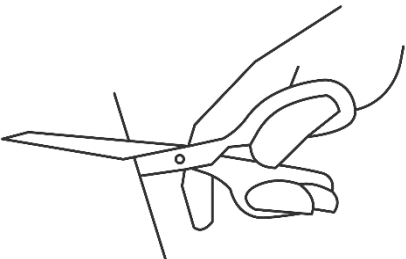
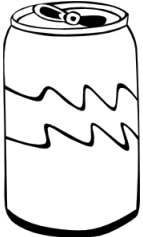
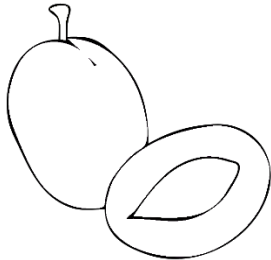
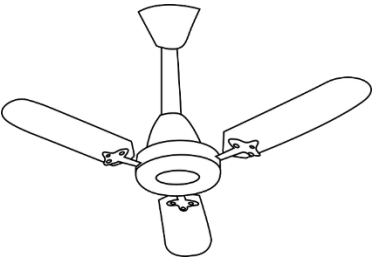
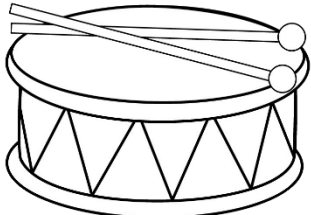




-um

-ut



You need 3 different colours!

Circle the objects that rhyme using the same colour.

Write down each of the rhyming words pictured above.

__an

__an

__an

__ __um

__ __um

__ __umb

__ut

__ut

__ __ut

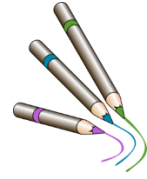
Identifying Rhyming Words **Answers**

Rhyme families:

-an

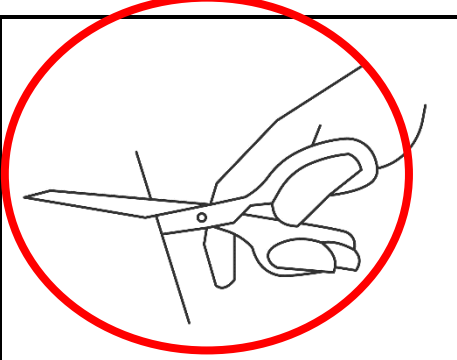
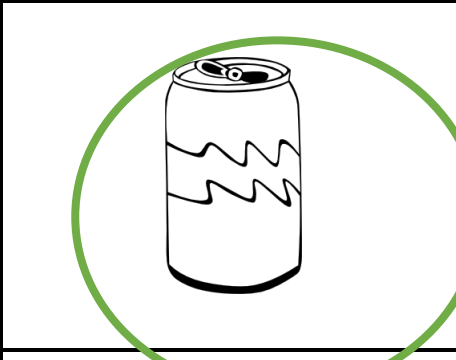
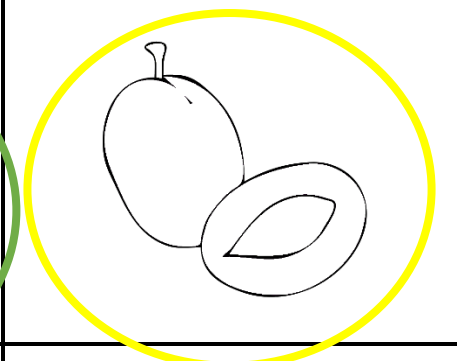
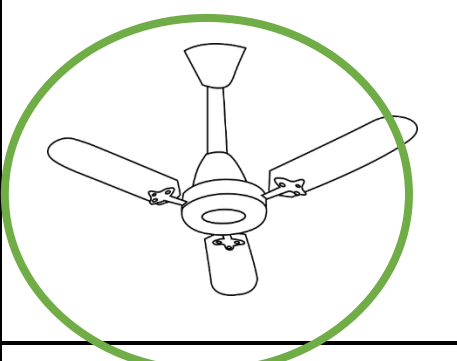
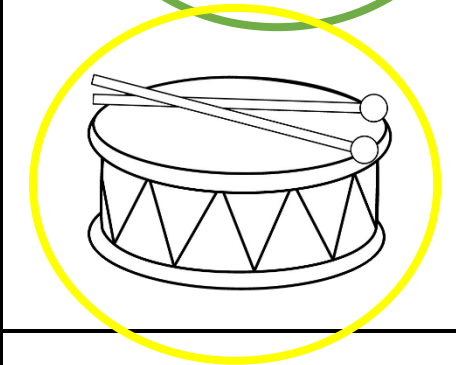

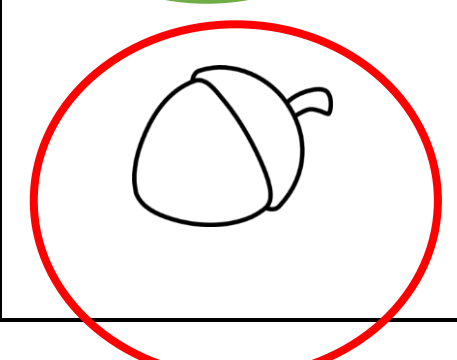

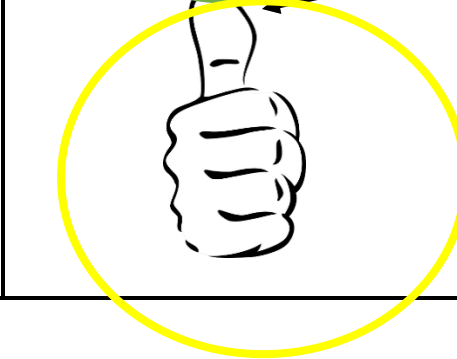
-um

-ut



You need 3 different colours!

Circle the objects that rhyme using the same colour.

Write down each of the rhyming words pictured above.

fan

can

van

plum

drum

thumb

cut

nut

shut

