

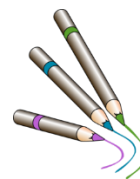
Identifying Rhyming Words

Rhyme families:

-ap

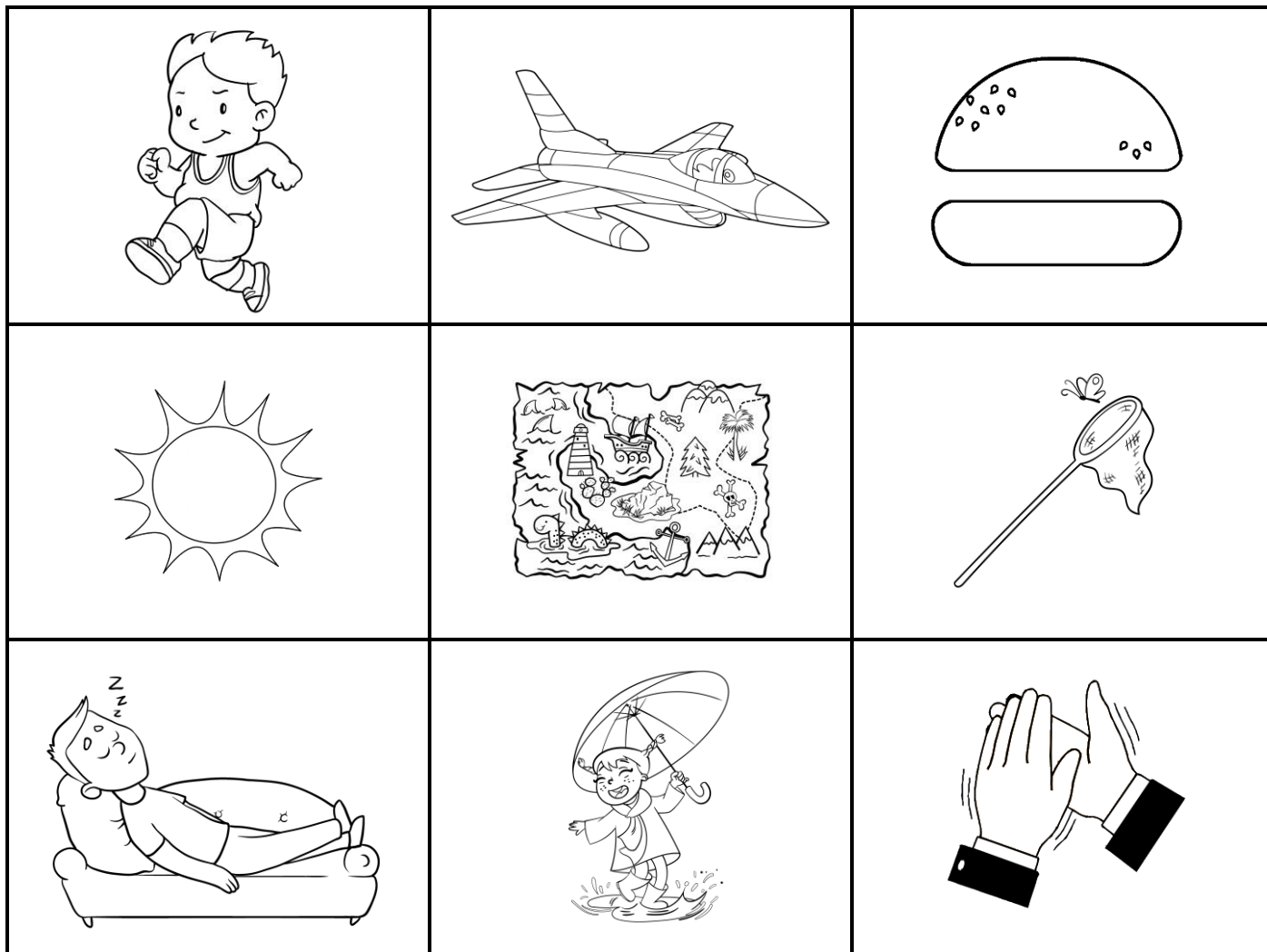
-un

-et



You need 3 different colours!

Colour the objects that rhyme using the same colour.



Write down each of the rhyming words pictured above.

__ap
__ap
__ __ap

__un
__un
__un

__et
__et
__et

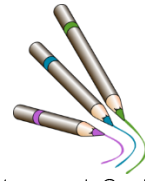
Identifying Rhyming Words **Answers**

Rhyme families:

-ap

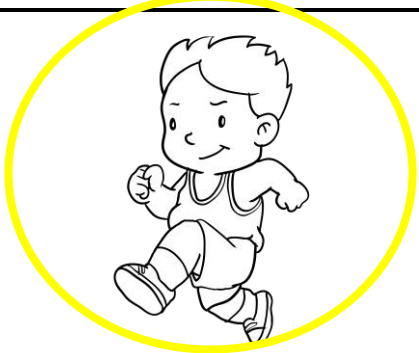
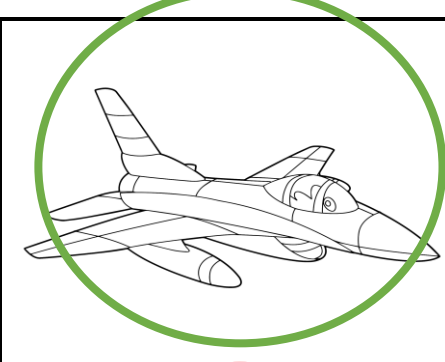
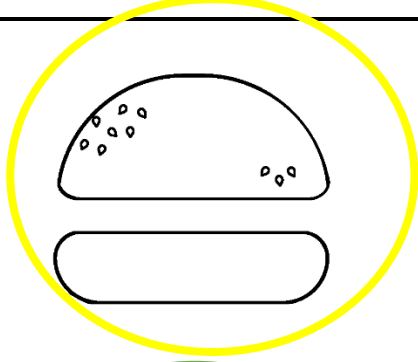
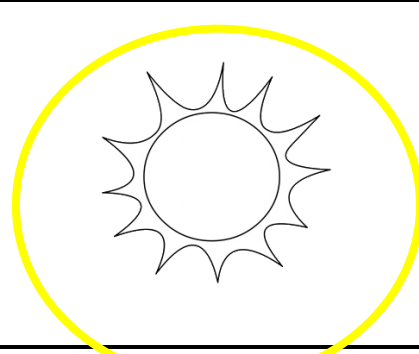

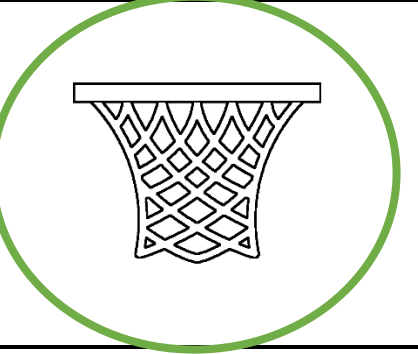
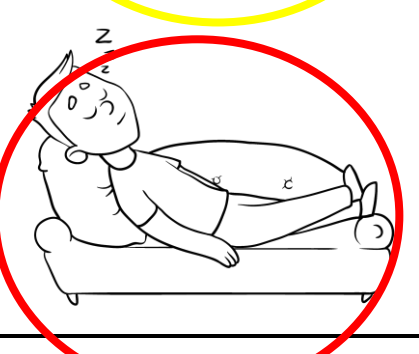

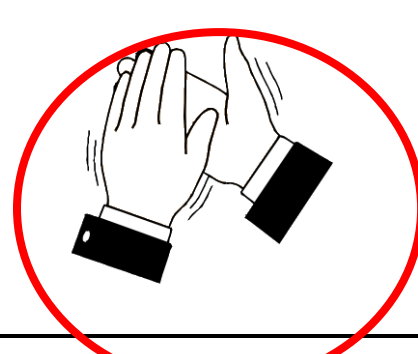
-un

-et



You will need 3 different colours!

Colour the objects that rhyme using the same colour.

Write down each of the rhyming words pictured above.

map

nap

clap

sun

run

bun

wet

net

jet

