

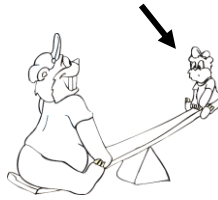
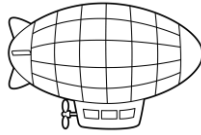
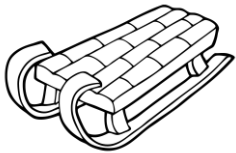
We are learning about...

Drawing Time!
small and smelly

sm



Colour pictures that begin with **sm**



Draw a line to match blend to the correct word ending. Write each word in the lines.



sm

at

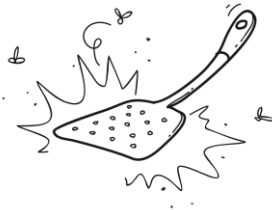
ooth

art

ick

ack

all



sm

Add in the **sm** blend to make words. Draw a picture to match.

__ash

__all

__ooth

__ack



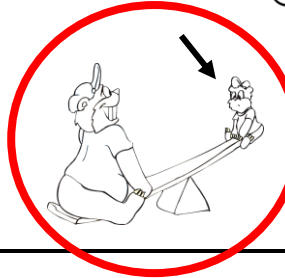
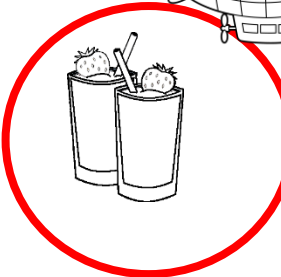
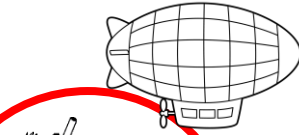
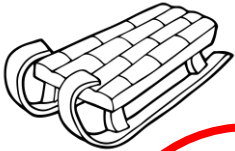
Answers

Drawing Time!
small and smelly

sm



Colour pictures that begin with **sm**



Draw a line to match blend to the correct word ending. Write each word in the lines.



sm

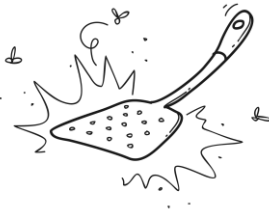
at

ooth

art

smart

ick



sm

ack

smack

all

Add in the **sm** blend to make words. Draw a picture to match.

smash

small

smooth

smack

