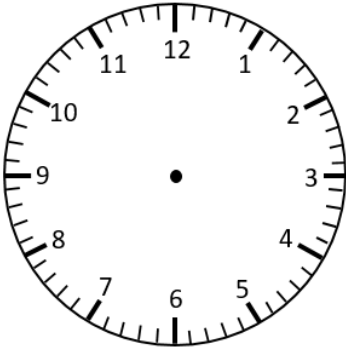


# Representing Time on Analogue Clocks

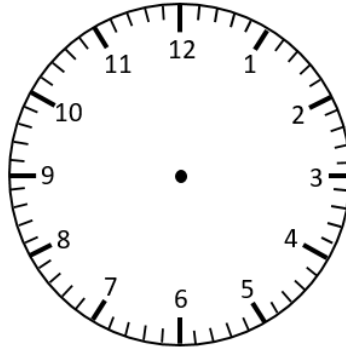
1 Minute Intervals

Draw the hands on the analogue clocks to match the digital times.

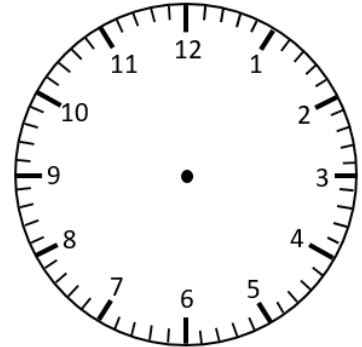
3:17



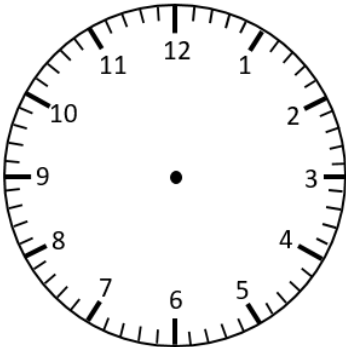
10:36



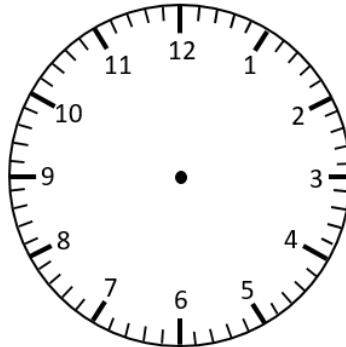
7:24



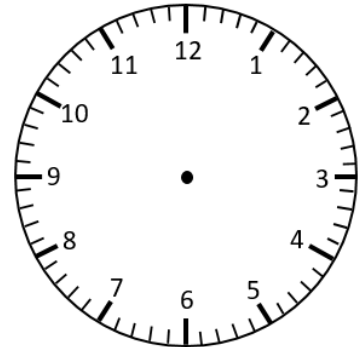
3:08



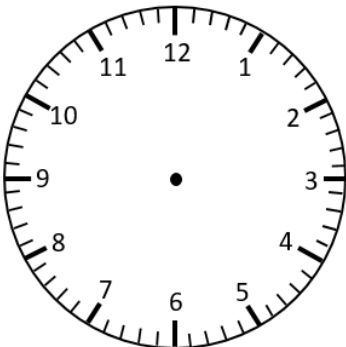
6:11



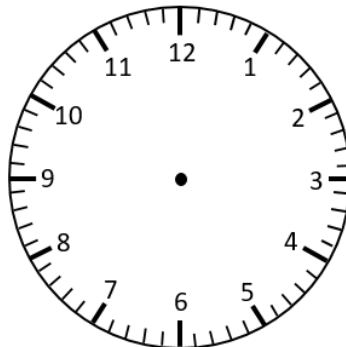
10:33



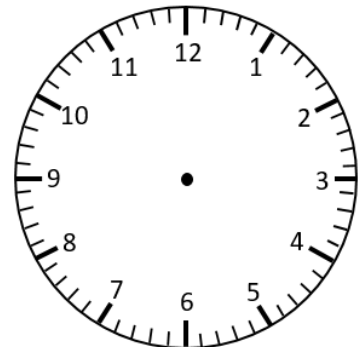
9:21



11:52

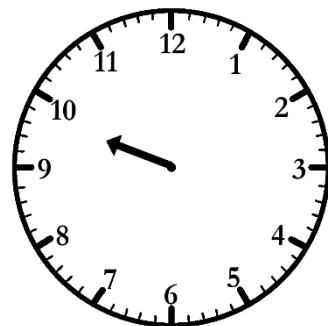


5:38



The minute hand is missing. Circle the time the clock is showing.  
Explain how you know.

9:30 or 9:45

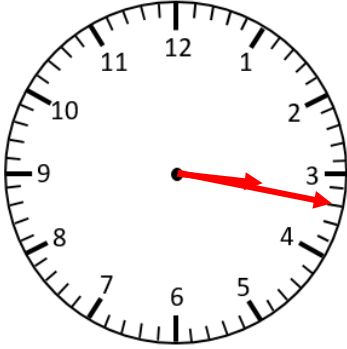


# Representing Time on Analogue Clocks **Answers**

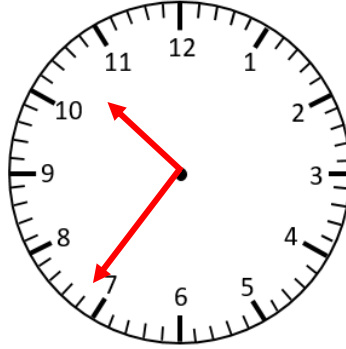
1 Minute Intervals

Draw the hands on the analogue clocks to match the digital times.

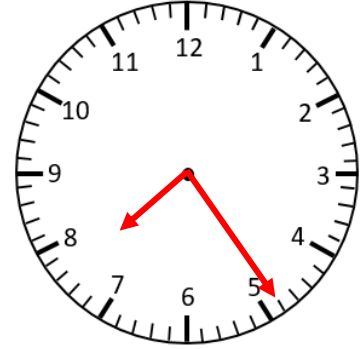
3:17



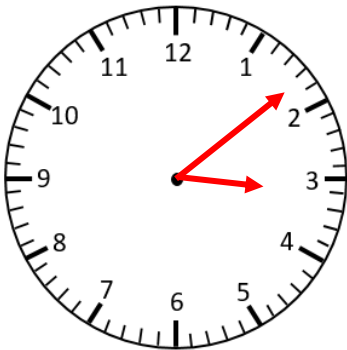
10:36



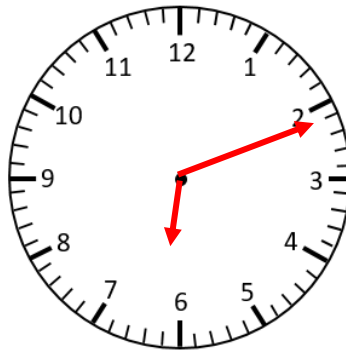
7:24



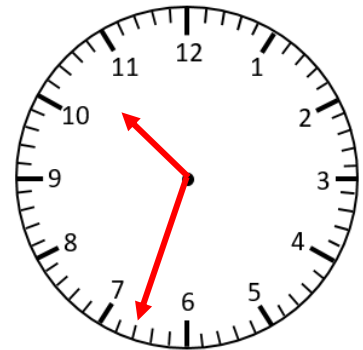
3:08



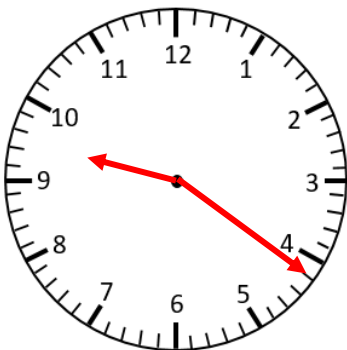
6:11



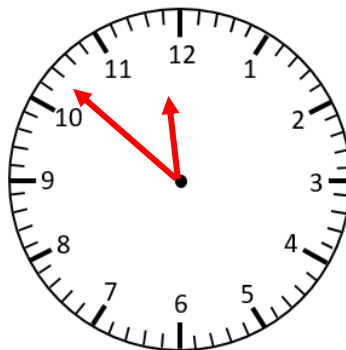
10:33



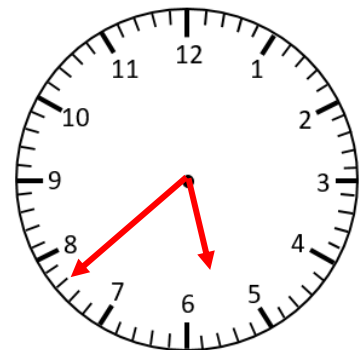
9:21



11:52



5:38



The minute hand is missing. Circle the time the clock is showing.  
Explain how you know.

9:30 or 9:45

