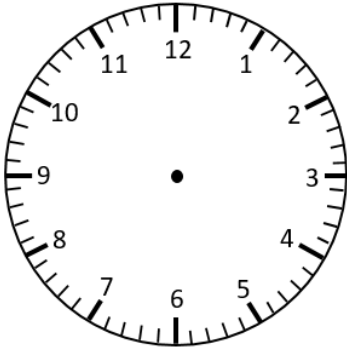


# Representing Time on Analogue Clocks

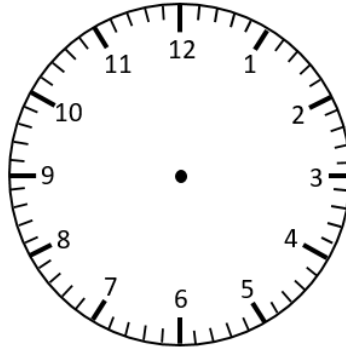
5 Minute Intervals

Draw the hands on the analogue clocks to match the digital times.

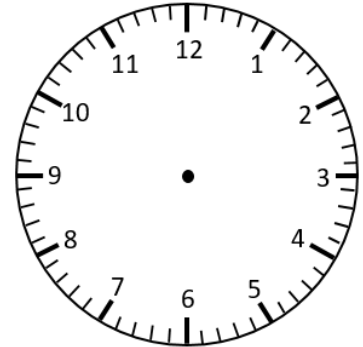
6:10



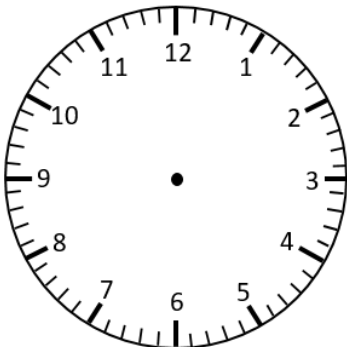
12:35



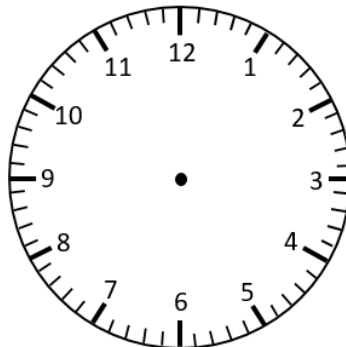
2:20



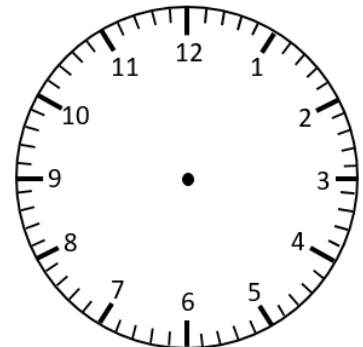
7:40



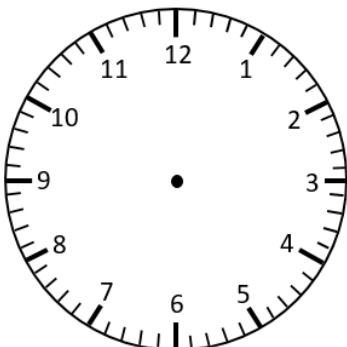
10:05



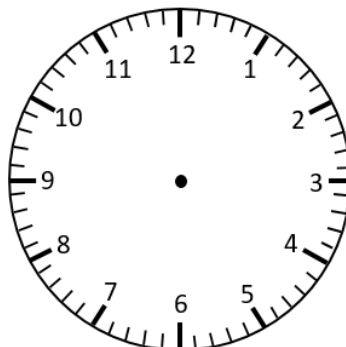
1:50



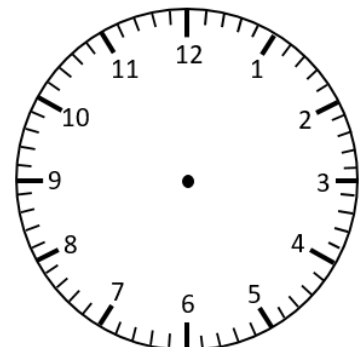
3:25



6:55

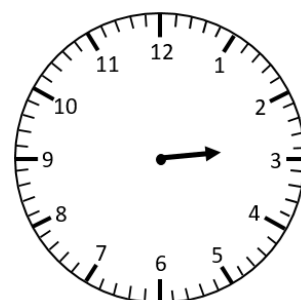


7:10



The minute hand is missing. Circle the time the clock is showing.  
How do you know?

2:10 or 2:40

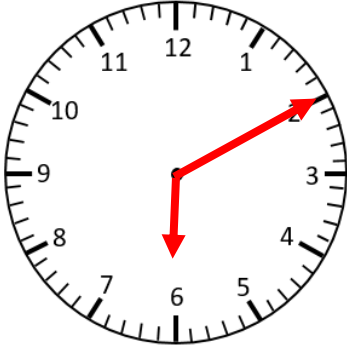


# Representing Time on Analogue Clocks **Answers**

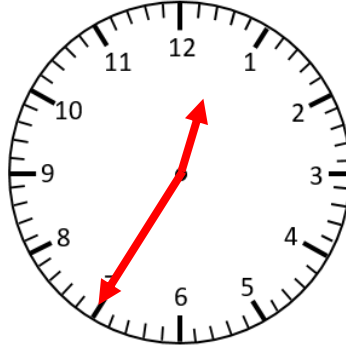
5 Minute Intervals

Draw the hands on the analogue clocks to match the digital times.

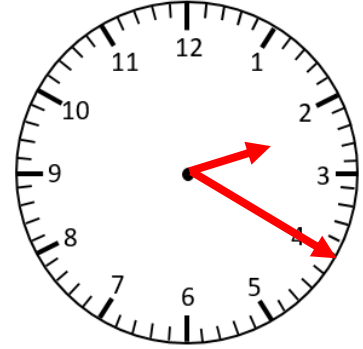
6:10



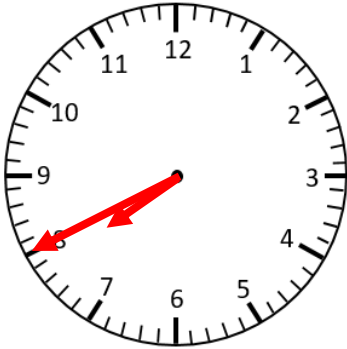
12:35



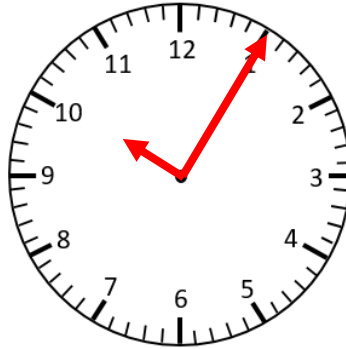
2:20



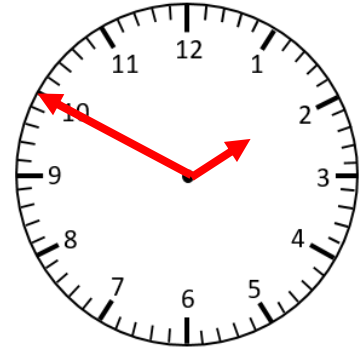
7:40



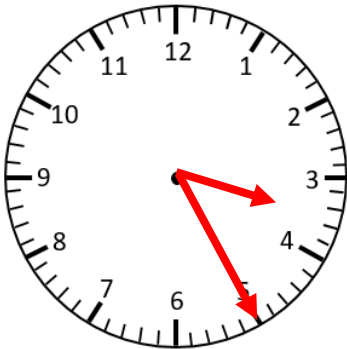
10:05



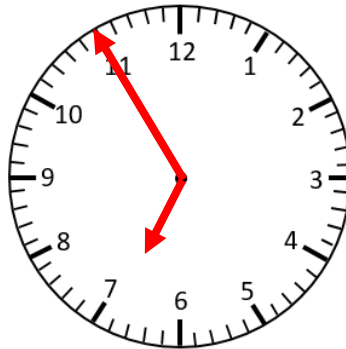
1:50



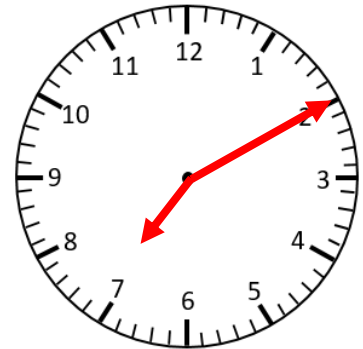
3:25



6:55



7:10



The minute hand is missing. Circle the time the clock is showing.  
How do you know?

2:10

or

2:40

