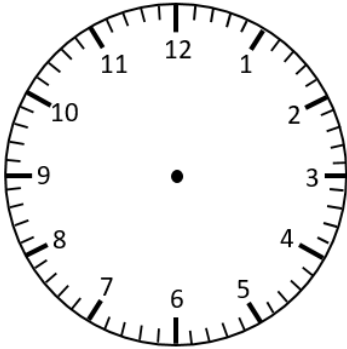


# Representing Time on Analogue Clocks

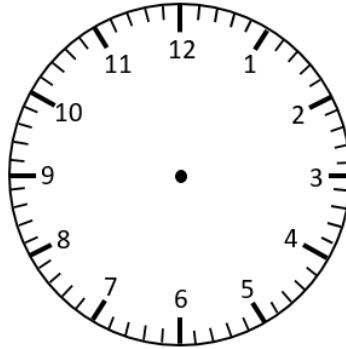
## Quarter Past & Quarter To

Draw the hands on the analogue clocks to match the digital times.

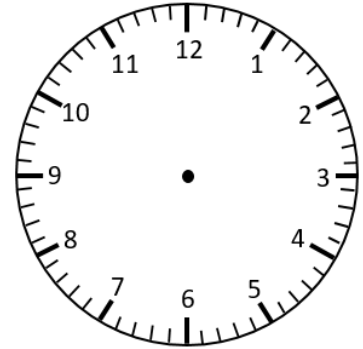
5:15



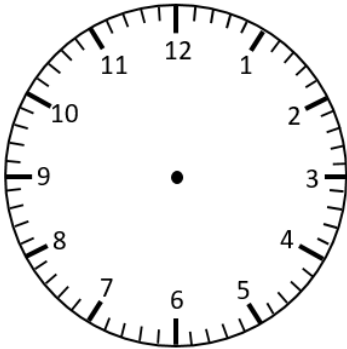
6:45



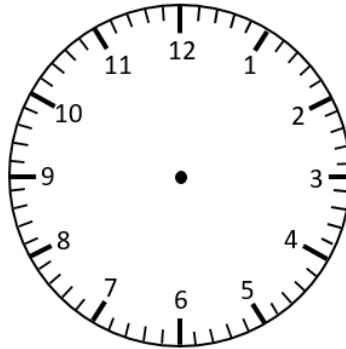
9:15



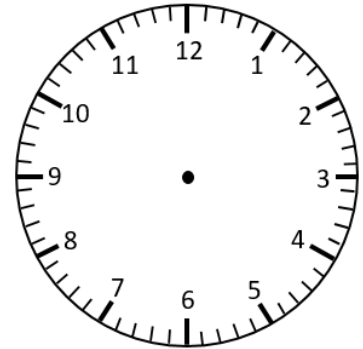
3:15



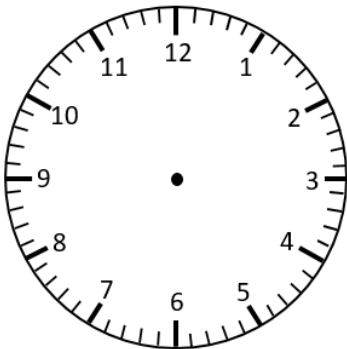
2:45



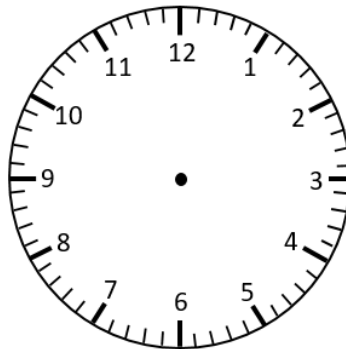
12:45



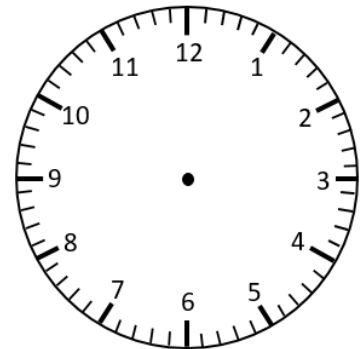
7:15



11:15

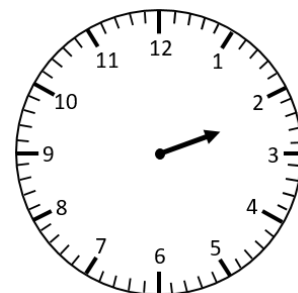


12:45



The minute hand is missing. Circle the time the clock is showing.  
How do you know?

2:15 or 2:45

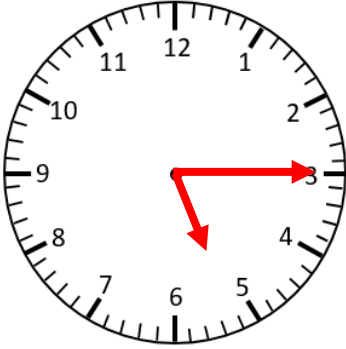


# Representing Time on Analogue Clocks **Answers**

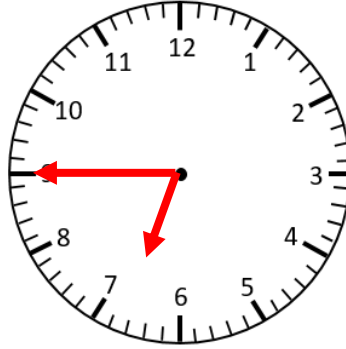
## Quarter Past & Quarter To

Draw the hands on the analogue clocks to match the digital times.

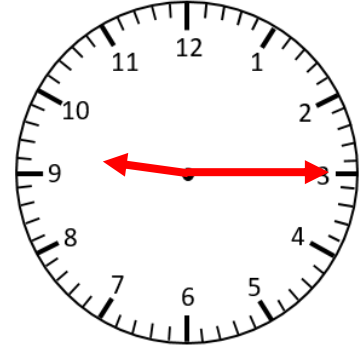
5:15



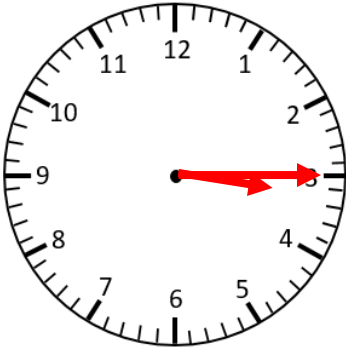
6:45



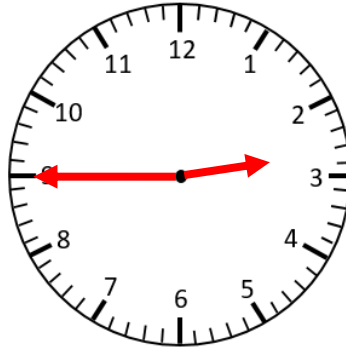
9:15



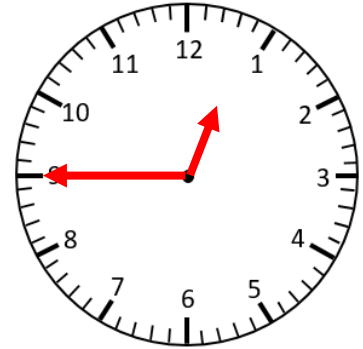
3:15



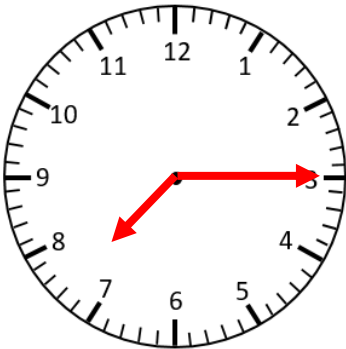
2:45



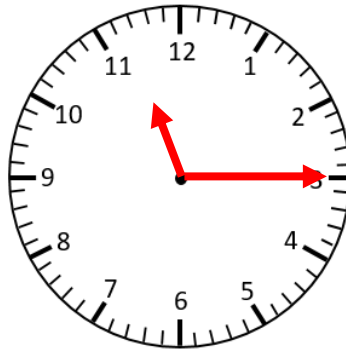
12:45



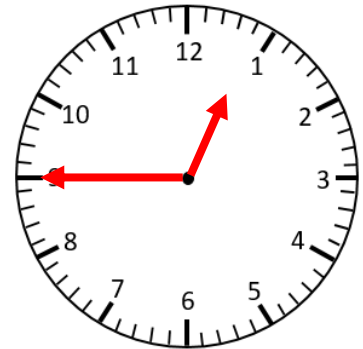
7:15



11:15



12:45



The minute hand is missing. Circle the time the clock is showing.  
How do you know?

2:15 or 2:45

