

# Reading Analogue Scales

## Kilograms & Grams

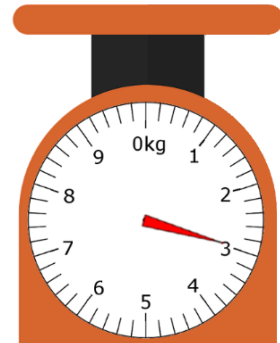
Read the weight each scale is showing. Record it in three different ways.  
The first has been done for you.



- a) 1 kilogram 600 grams  
b) 1.6 kg  
c) 1600 g



- a) \_\_\_ kilogram \_\_\_ grams  
b) \_\_\_ kg  
c) \_\_\_ g



- a) \_\_\_ kilogram \_\_\_ grams  
b) \_\_\_ kg  
c) \_\_\_ g



- a) \_\_\_ kilogram \_\_\_ grams  
b) \_\_\_ kg  
c) \_\_\_ g



- a) \_\_\_ kilogram \_\_\_ grams  
b) \_\_\_ kg  
c) \_\_\_ g



- a) \_\_\_ kilogram \_\_\_ grams  
b) \_\_\_ kg  
c) \_\_\_ g



- a) \_\_\_ kilogram \_\_\_ grams  
b) \_\_\_ kg  
c) \_\_\_ g



- a) \_\_\_ kilogram \_\_\_ grams  
b) \_\_\_ kg  
c) \_\_\_ g



- a) \_\_\_ kilogram \_\_\_ grams  
b) \_\_\_ kg  
c) \_\_\_ g

# Reading Analogue Scales Answers

## Kilograms & Grams

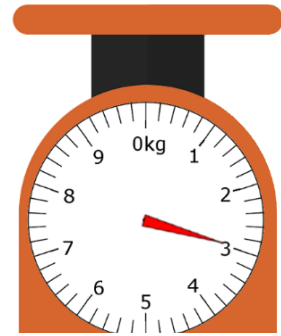
Read the weight each scale is showing. Record it in three different ways.  
The first has been done for you.



- a) 1 kilogram 600 grams  
b) 1.6 kg  
c) 1600 g



- a) 1 kilogram 200 grams  
b) 1.2 kg  
c) 1200 g



- a) 3 kilogram 0 grams  
b) 3 kg  
c) 3000 g



- a) 6 kilogram 400 grams  
b) 6.4 kg  
c) 6400 g



- a) 4 kilogram 800 grams  
b) 4.8 kg  
c) 4800 g



- a) 3 kilogram 600 grams  
b) 3.6 kg  
c) 3600 g



- a) 5 kilogram 400 grams  
b) 5.4 kg  
c) 5400 g



- a) 1 kilogram 200 grams  
b) 1.2 kg  
c) 1200 g



- a) 2 kilogram 800 grams  
b) 2.8 kg  
c) 2800 g