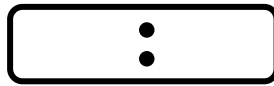
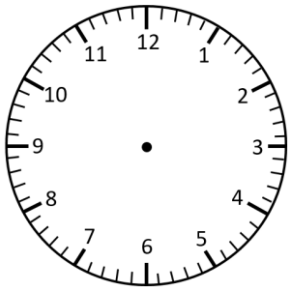


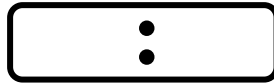
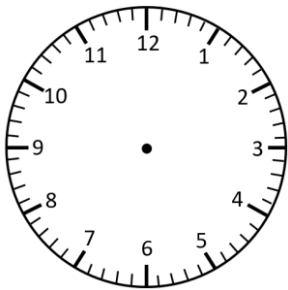
Representing Time: Digital & Analogue

O'clock & Half Past

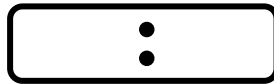
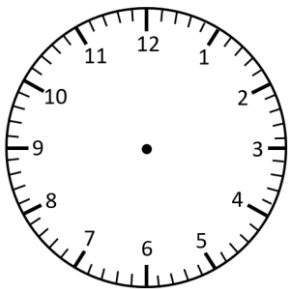
Read the times and represent in **analogue** and **digital** forms.



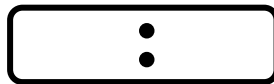
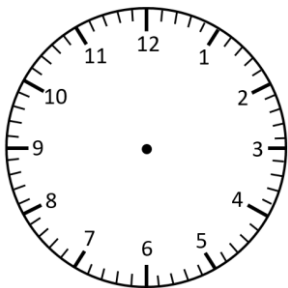
half past 6



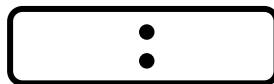
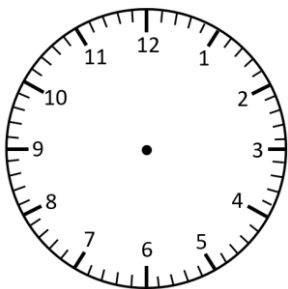
8 o'clock



half past 5



7 o'clock

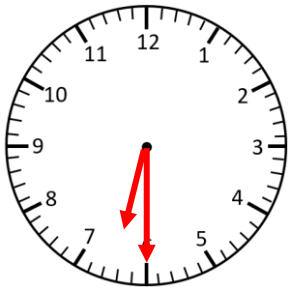


half past 7

Representing Time: Digital & Analogue Answers

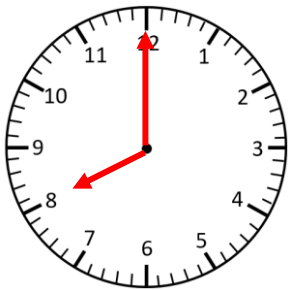
O'clock & Half Past

Read the times and represent in **analogue** and **digital** forms.



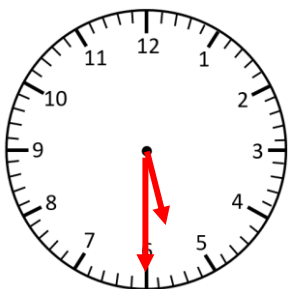
6:30

half past 6



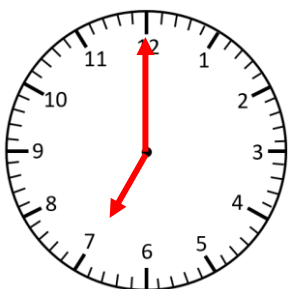
8:00

8 o'clock



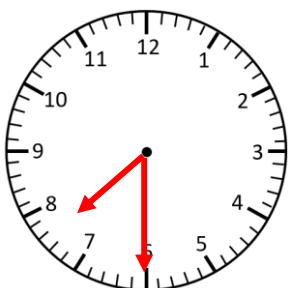
5:30

half past 5



7:00

7 o'clock



7:30

half past 7