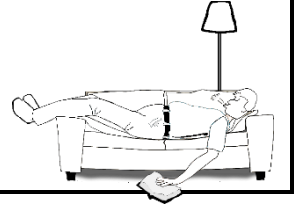


# Word Problems

Elapsed Time: 15 Minute Intervals

1. Darren fell asleep on the couch at 6:45pm. He woke up 30 minutes later.  
What time did he wake up?



2. Lyn turned on the TV at 7:30pm. She turned it off at 8:15pm.  
How long was the TV on?

3. The art class began at 8am and finished at 9:45am.  
How long did the art class go for?



4. Donny's favourite TV show finished at 6:00pm. It began half an hour earlier.  
What time did the show begin?

5. It takes Tim 15 minutes to walk to the bus from home.  
If he leaves home at 8:00am, what time should he reach the bus stop?

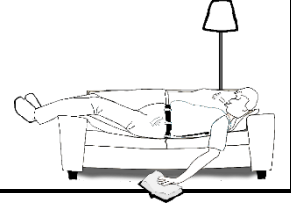


# Word Problems **Answers**

Elapsed Time: 15 Minute Intervals

1. Darren fell asleep on the couch at 6:45pm. He woke up 30 minutes later.  
What time did he wake up?

**7:15pm**

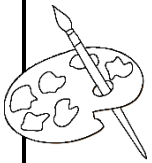


2. Lyn turned on the TV at 7:30pm. She turned it off at 8:00pm.  
How long was the TV on?

**45 minutes**

3. The art class began at 8am and finished at 10am.  
How long did the art class go for?

**1 hour 45 minutes**



4. Donny's favourite TV show finished at 6:00pm. It began half an hour earlier.  
What time did the show begin?

**5:30pm**

5. It takes Tim 15 minutes to walk to the bus from home.  
If he leaves home at 8:00am, what time should he reach the bus stop?

**8:15am**

