

# Converting Grams to Kilograms

## Working with Tenths

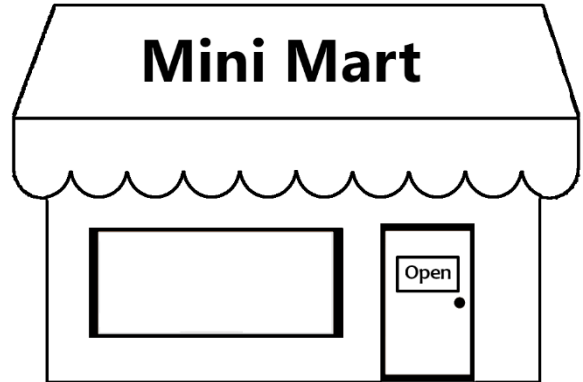
Jill went shopping. The weight of each food she bought is shown.

Convert each of the weights from grams to kilograms.



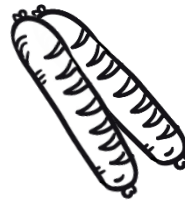
pumpkin

$4400 \text{ g} = \underline{\hspace{2cm}} \text{ kg}$



biscuits

$500 \text{ g} = \underline{\hspace{2cm}} \text{ kg}$



sausages

$1900 \text{ g} = \underline{\hspace{2cm}} \text{ kg}$



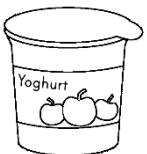
muffins

$1000 \text{ g} = \underline{\hspace{2cm}} \text{ kg}$



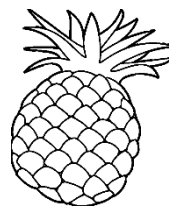
milk

$1500 \text{ g} = \underline{\hspace{2cm}} \text{ kg}$



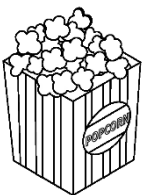
yoghurt

$1200 \text{ g} = \underline{\hspace{2cm}} \text{ kg}$



pineapple

$2300 \text{ g} = \underline{\hspace{2cm}} \text{ kg}$



popcorn

$300 \text{ g} = \underline{\hspace{2cm}} \text{ kg}$



cherries

$1800 \text{ g} = \underline{\hspace{2cm}} \text{ kg}$

**Challenge:** What is the total weight of the fruit and vegetable Jill bought?

# Converting Grams to Kilograms **Answers**

## Working with Tenths

Jill went shopping. The weight of each food she bought is shown.

Convert each of the weights from grams to kilograms.



pumpkin

$$4400 \text{ g} = 4.4 \text{ kg}$$



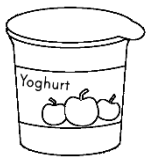
biscuits

$$500 \text{ g} = 0.5 \text{ kg}$$



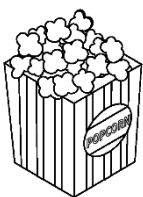
muffins

$$1000 \text{ g} = 1 \text{ kg}$$



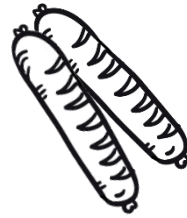
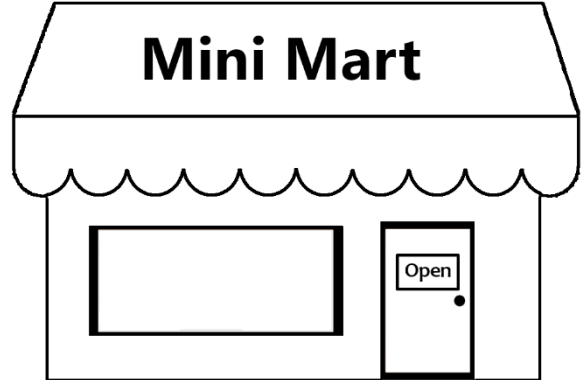
yoghurt

$$1200 \text{ g} = 1.2 \text{ kg}$$



popcorn

$$300 \text{ g} = 0.3 \text{ kg}$$



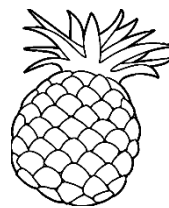
sausages

$$1900 \text{ g} = 1.9 \text{ kg}$$



milk

$$1500 \text{ g} = 1.5 \text{ kg}$$



pineapple

$$2300 \text{ g} = 2.3 \text{ kg}$$



cherries

$$1800 \text{ g} = 1.8 \text{ kg}$$

**Challenge:** What is the total weight of the fruit and vegetable Jill bought?

**8.5kg / 8500g (pumpkin, pineapple, cherries)**