

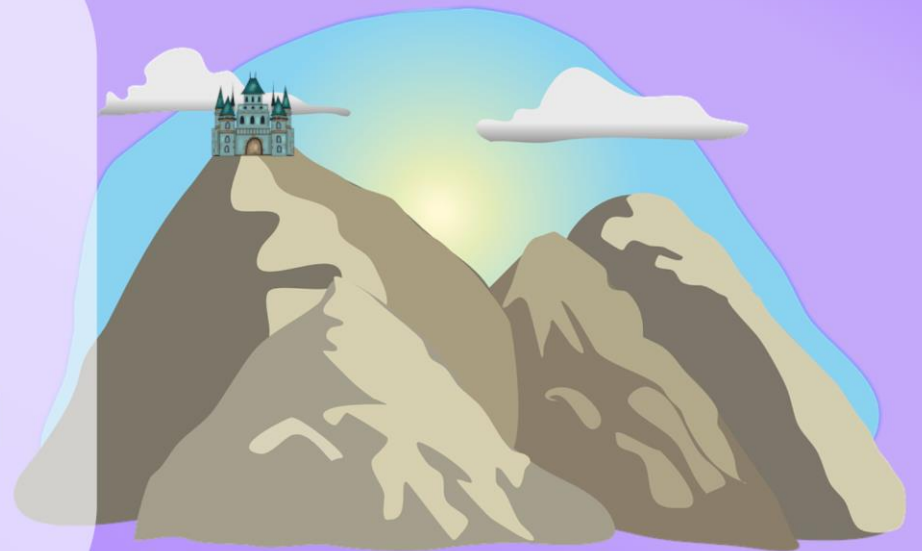
Introduction

The beginning of the story.

Who are the characters? Where does the story take place?

“

Peter rested his heavy apple cart in the middle of the dusty track. He took a sip of water and looked up at the castle that stood high above his small town.



Problem

The middle of the story. This is the part where something goes wrong.

“

Late at night, monsters would sometimes break through the wall around the town. Peter was scared for his family. He knew he had to do something about it.



Solution

The problem is solved.

“

Peter had done it! He had found everything the wizard needed to stop the monsters for good.

“Well done, Peter,” said the old man.



Setting

Where and when does the story take place?

“

Peter had lived in the same town all his life. He liked it here, but as he got older, he wanted to see more of the world.



Characters

Who are the characters? What do they want?
How do they act with each another?

Monster



Peter

Wizard

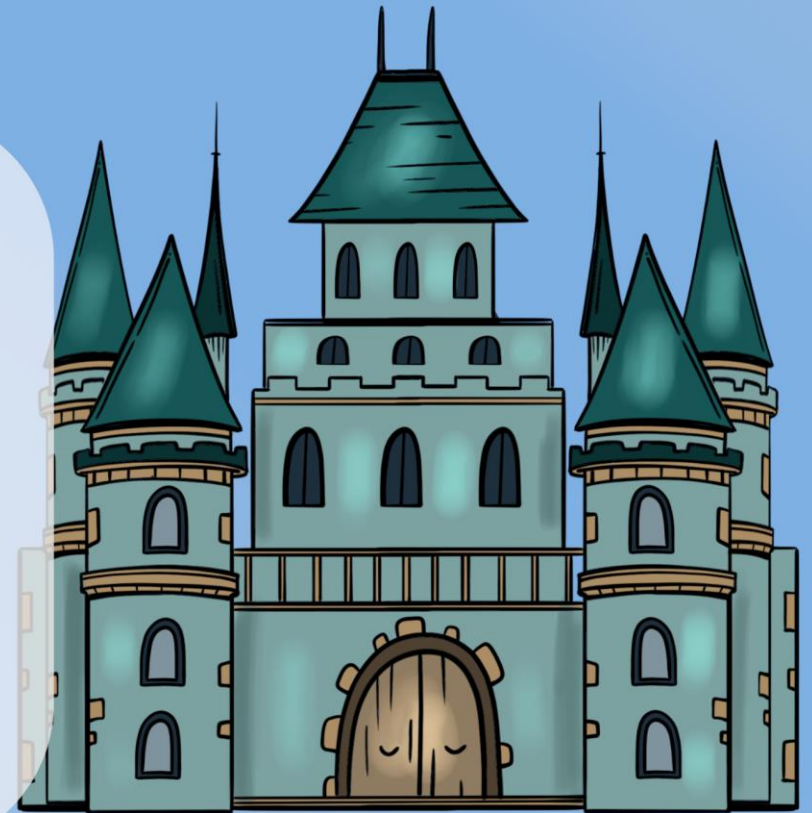


Adjectives & Adverbs

These add detail to the story.

“

The sky was dark and the wind was cold. Peter pulled his old coat over him as he crept quietly along the rocky path. The huge castle towered over him as he got closer.



Direct Speech

When characters talk to each another, it show their personalities and emotions.

“

"Run home and tell Mother to lock the doors!" Peter shouted to Simon.

"But I want to help," replied his younger brother.

"Go!" demanded Peter.



**The monsters
are here!**



Building Tension

Events that put the reader on the edge of their seat
and keep them there!

“

Snap! A tread suddenly broke.
Peter grabbed hold of the rails
and swung himself over the gap.
He was scared, but he wasn't
going to let anything stop him.

